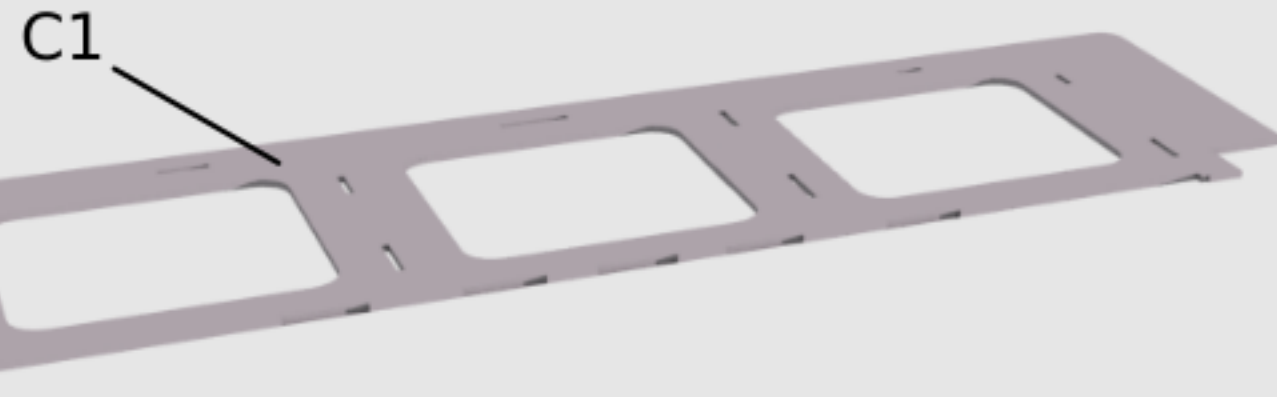


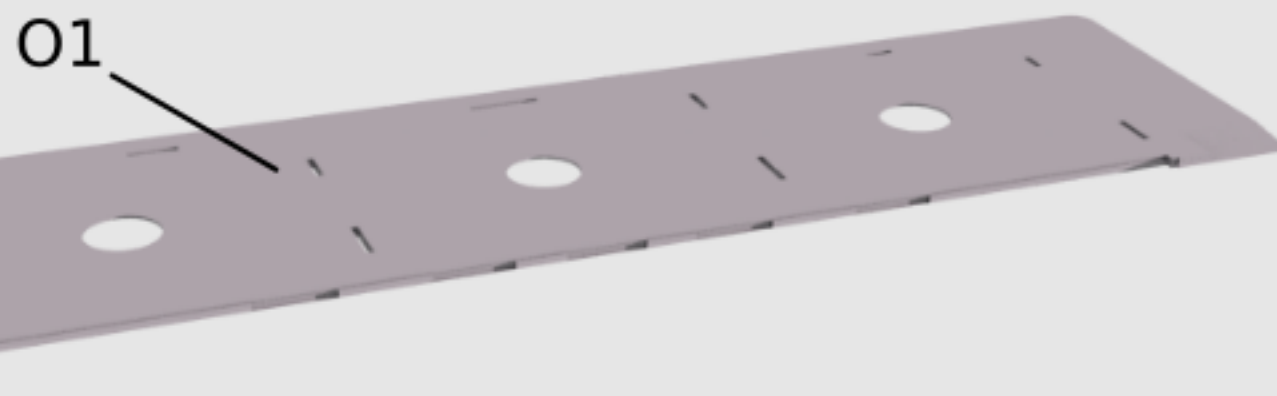
Se recomienda la utilización de cutters para separar las piezas de su marco, cola blanca como pegamento y pinzas para sujetar las partes mas pequeñas.

It is recommended to use cutters to separate the pieces from the frame, white glue to set the parts and tweezers to hold the smaller parts.

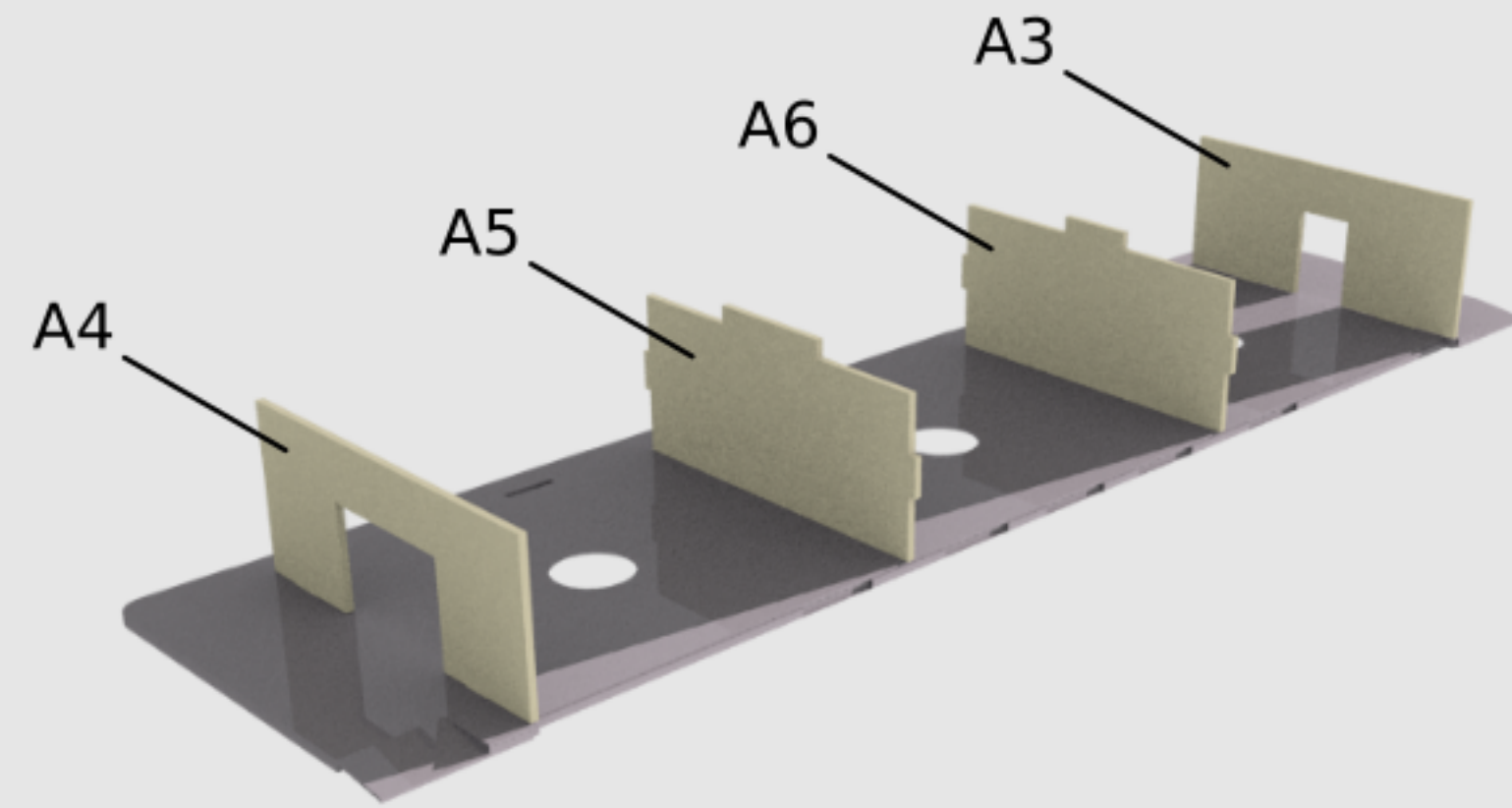
1



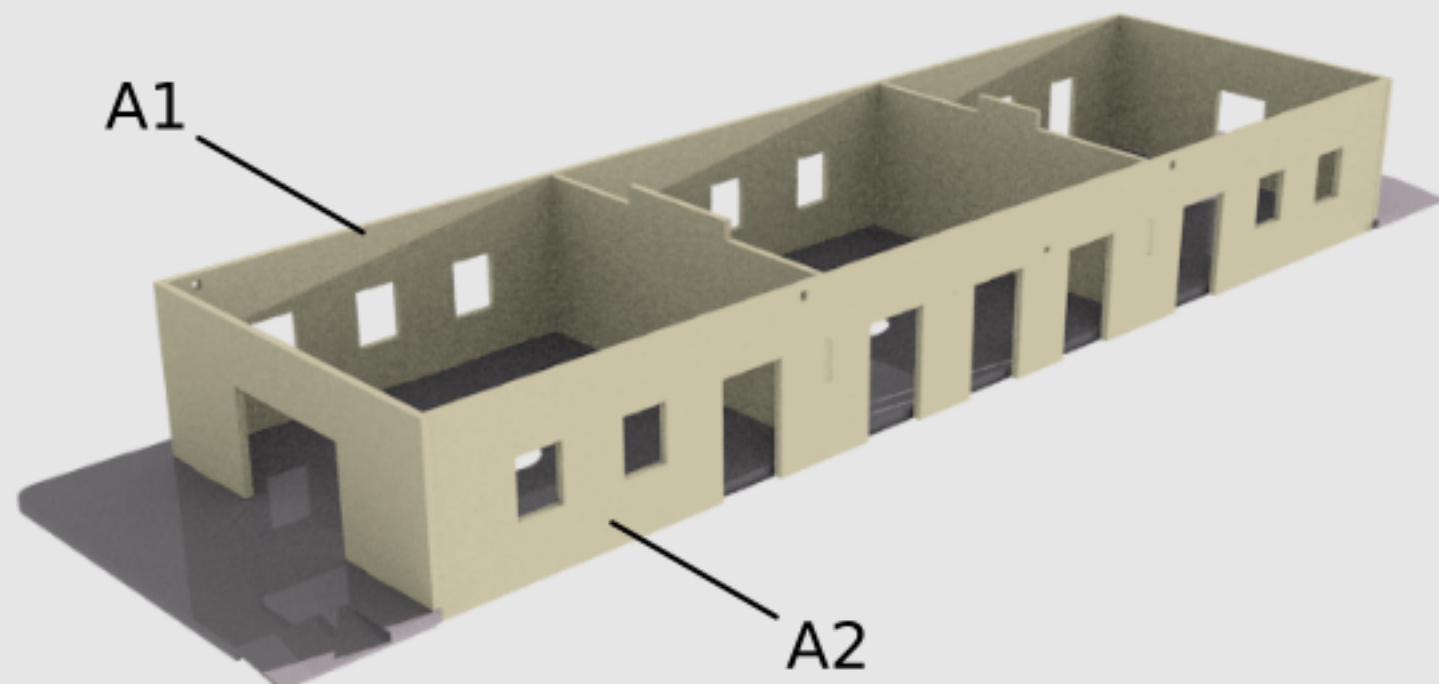
2



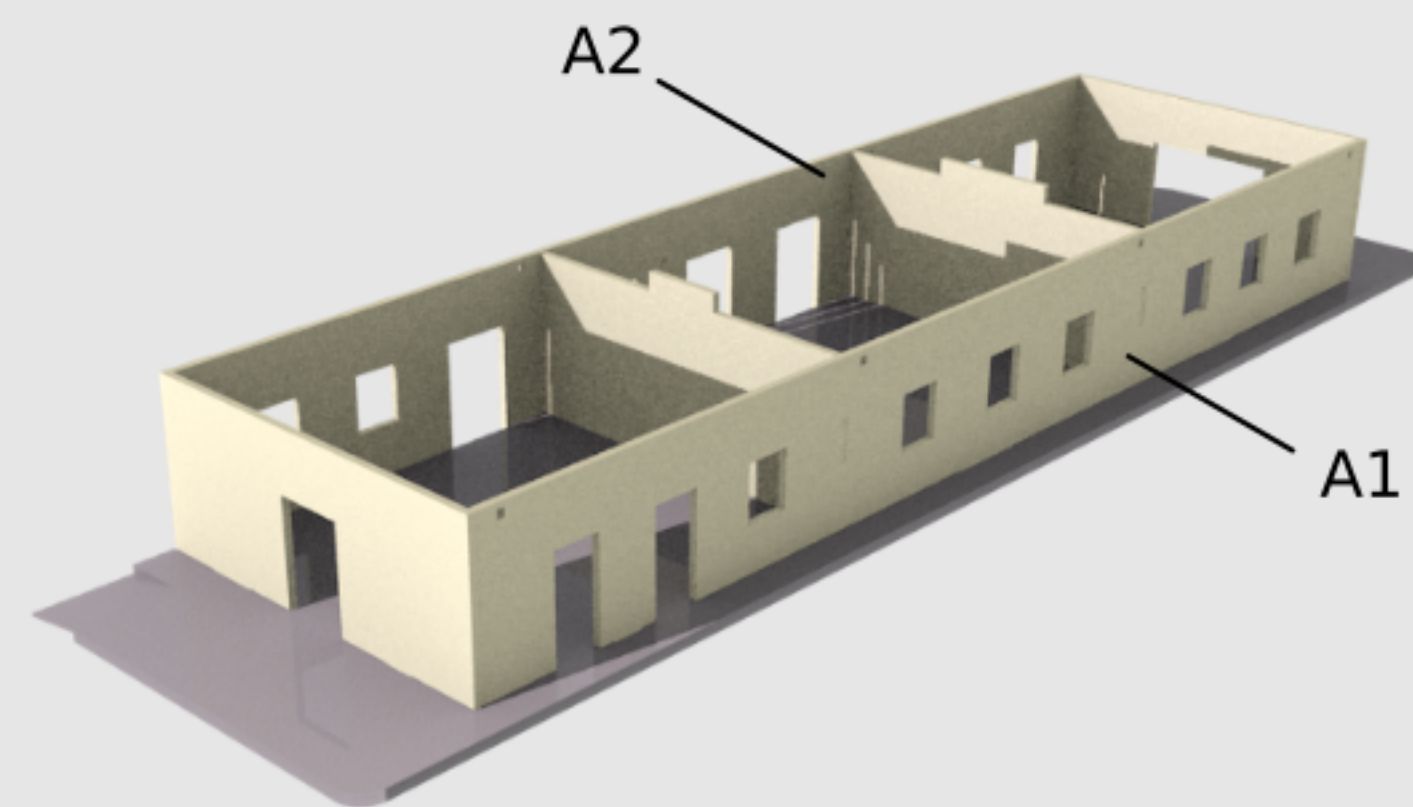
3



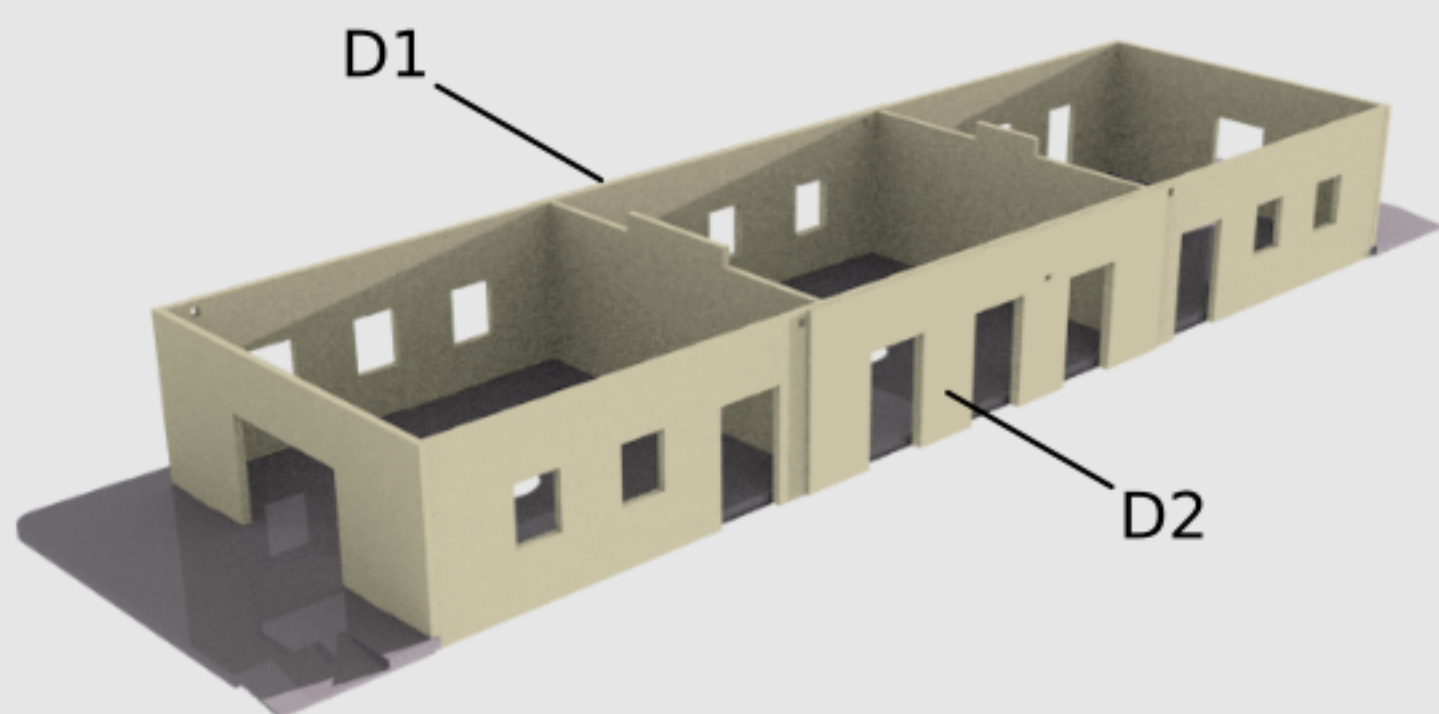
4



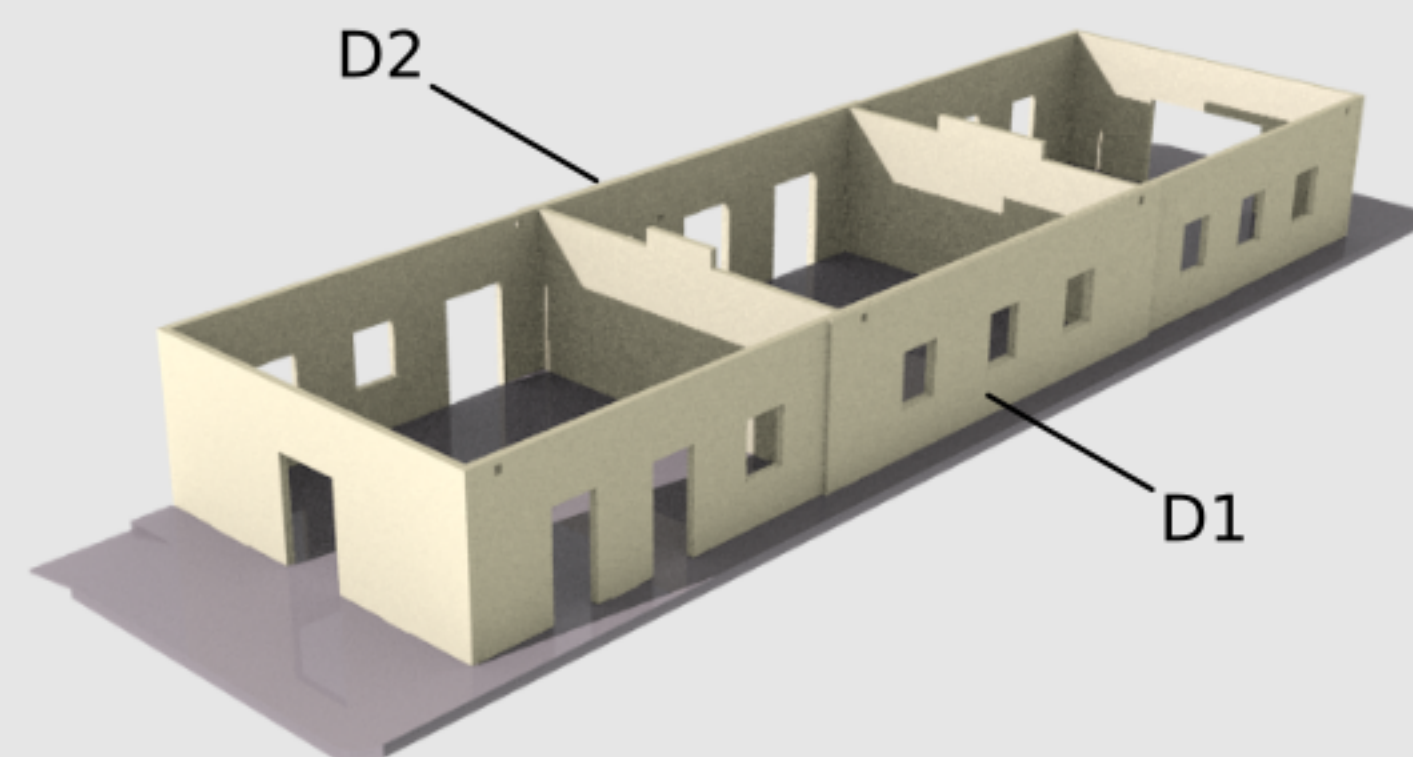
4b



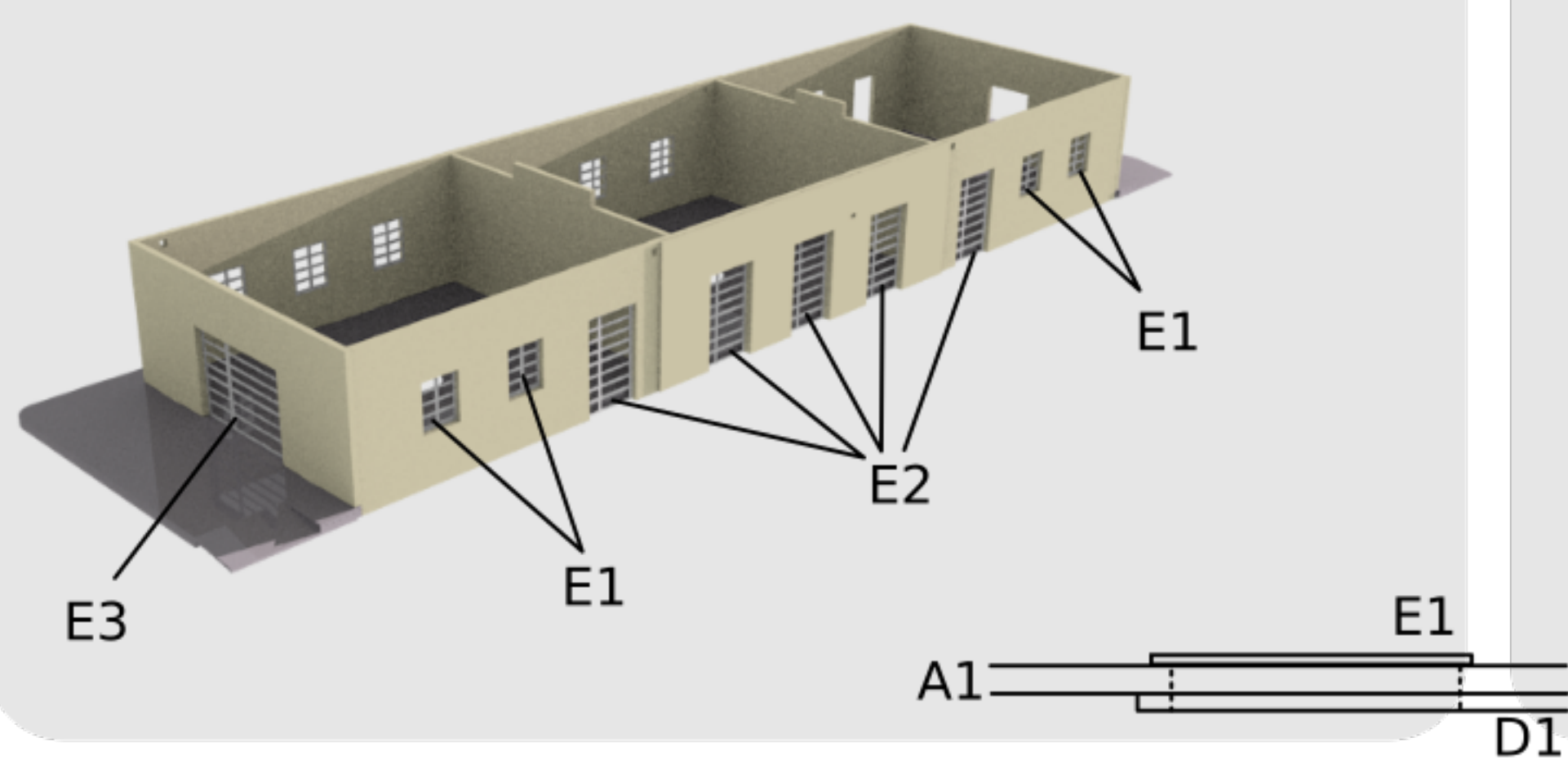
5



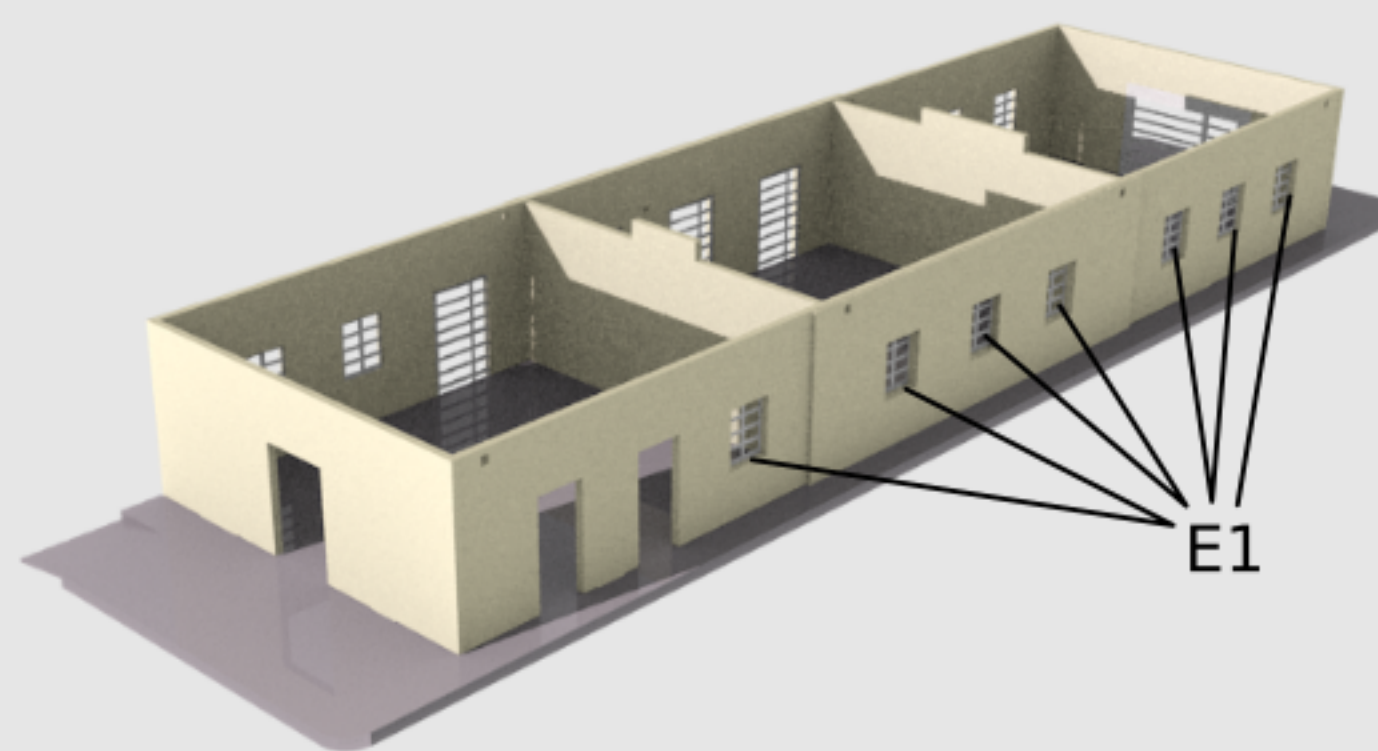
5b



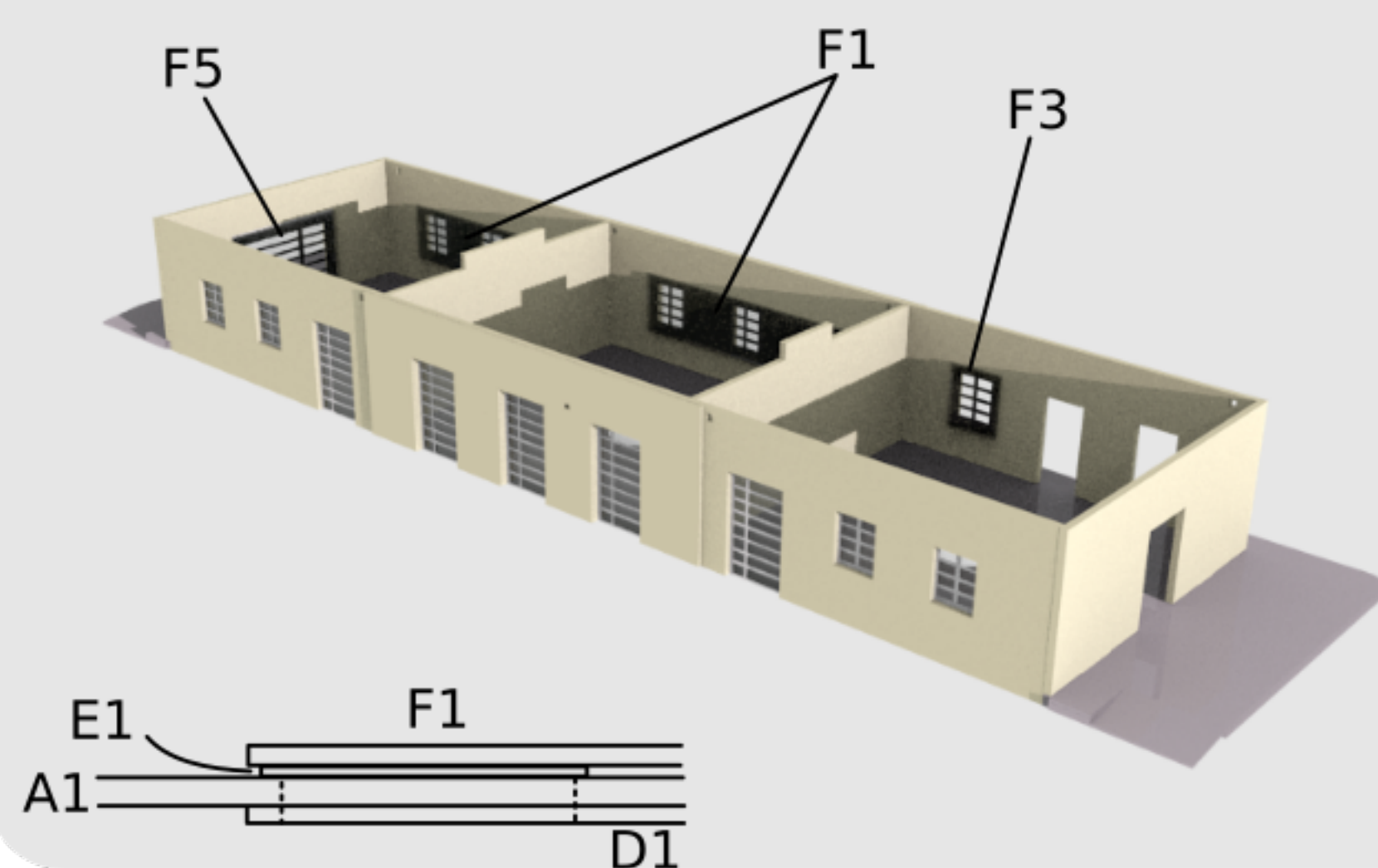
6



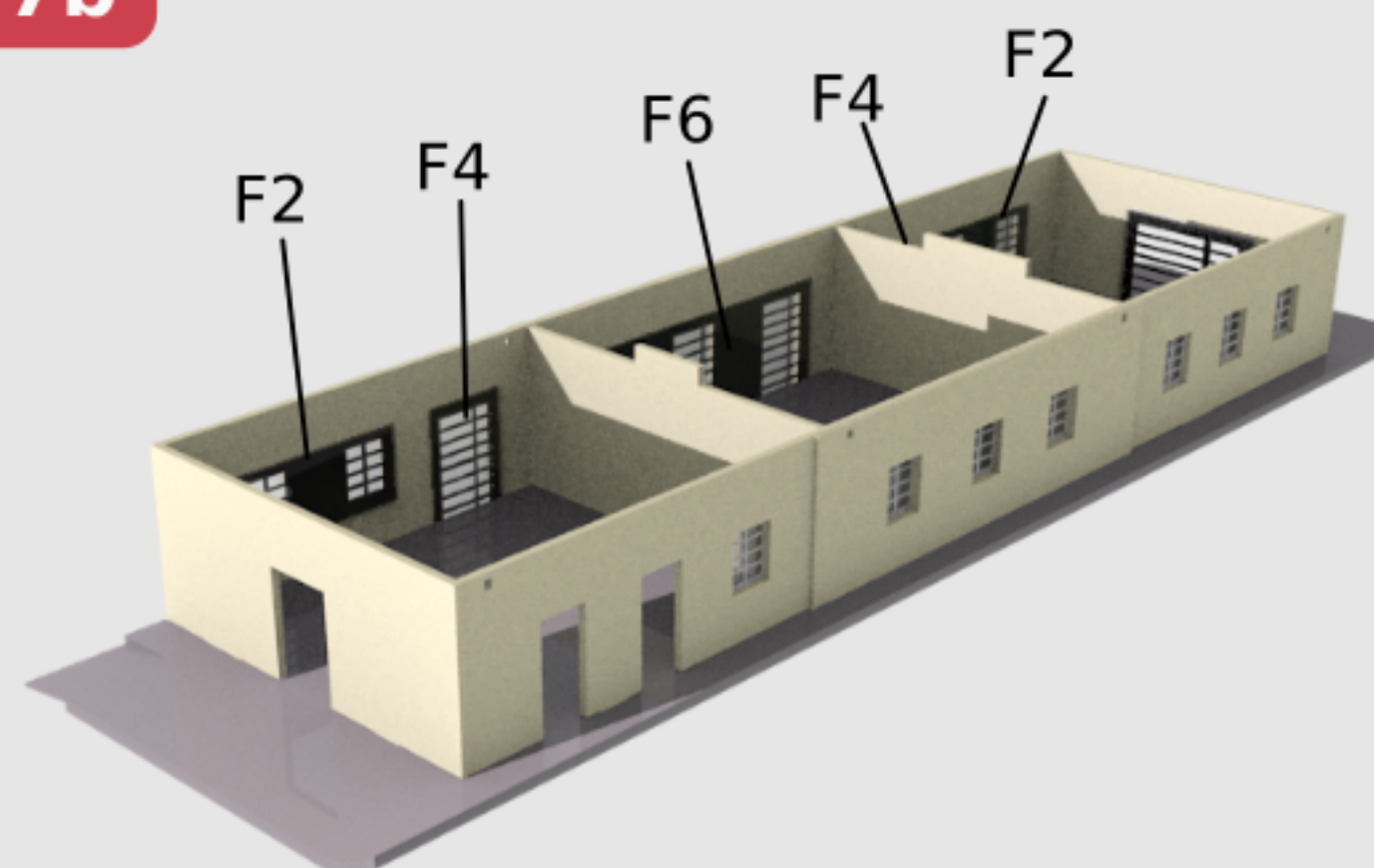
6b



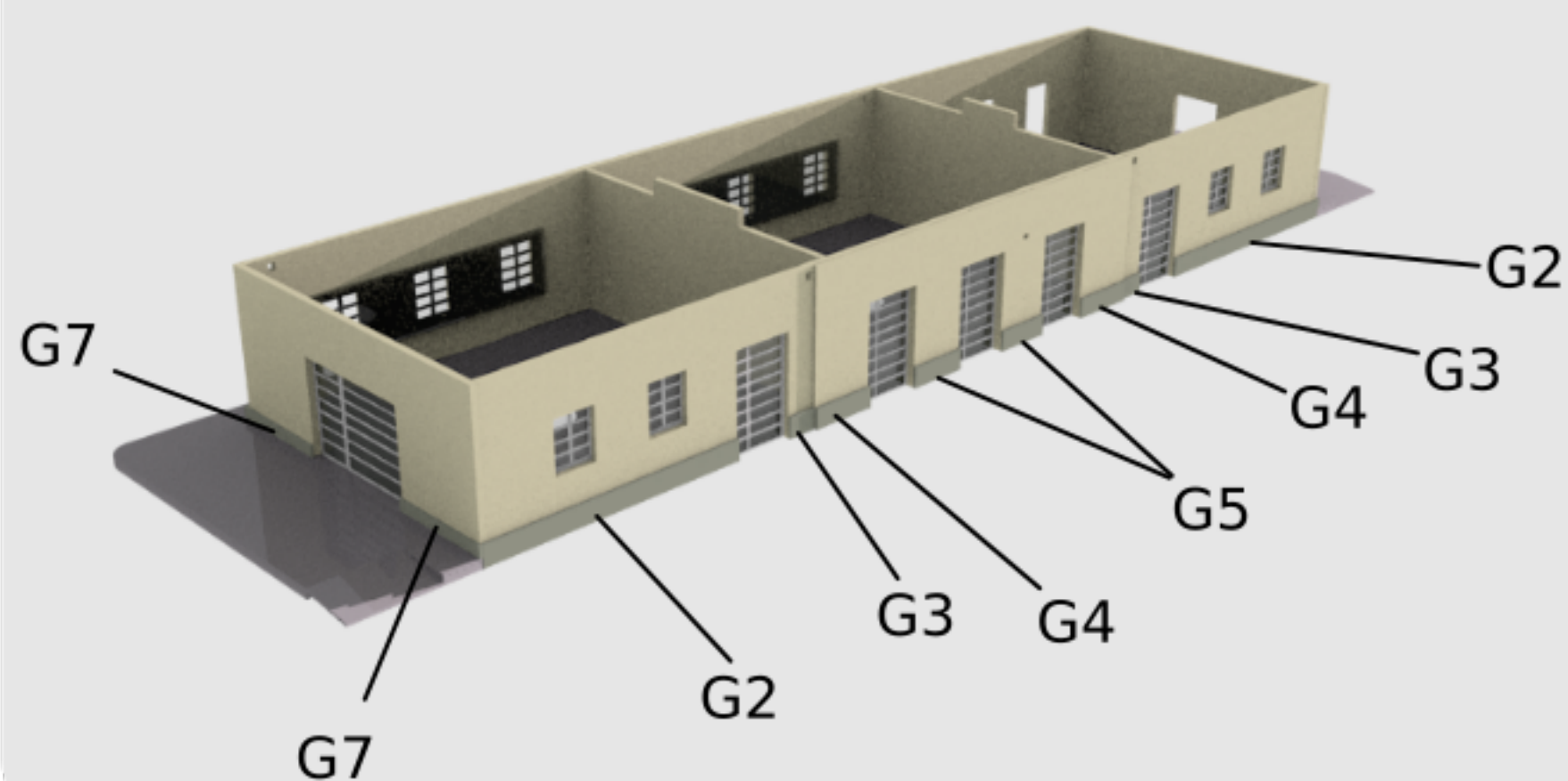
7



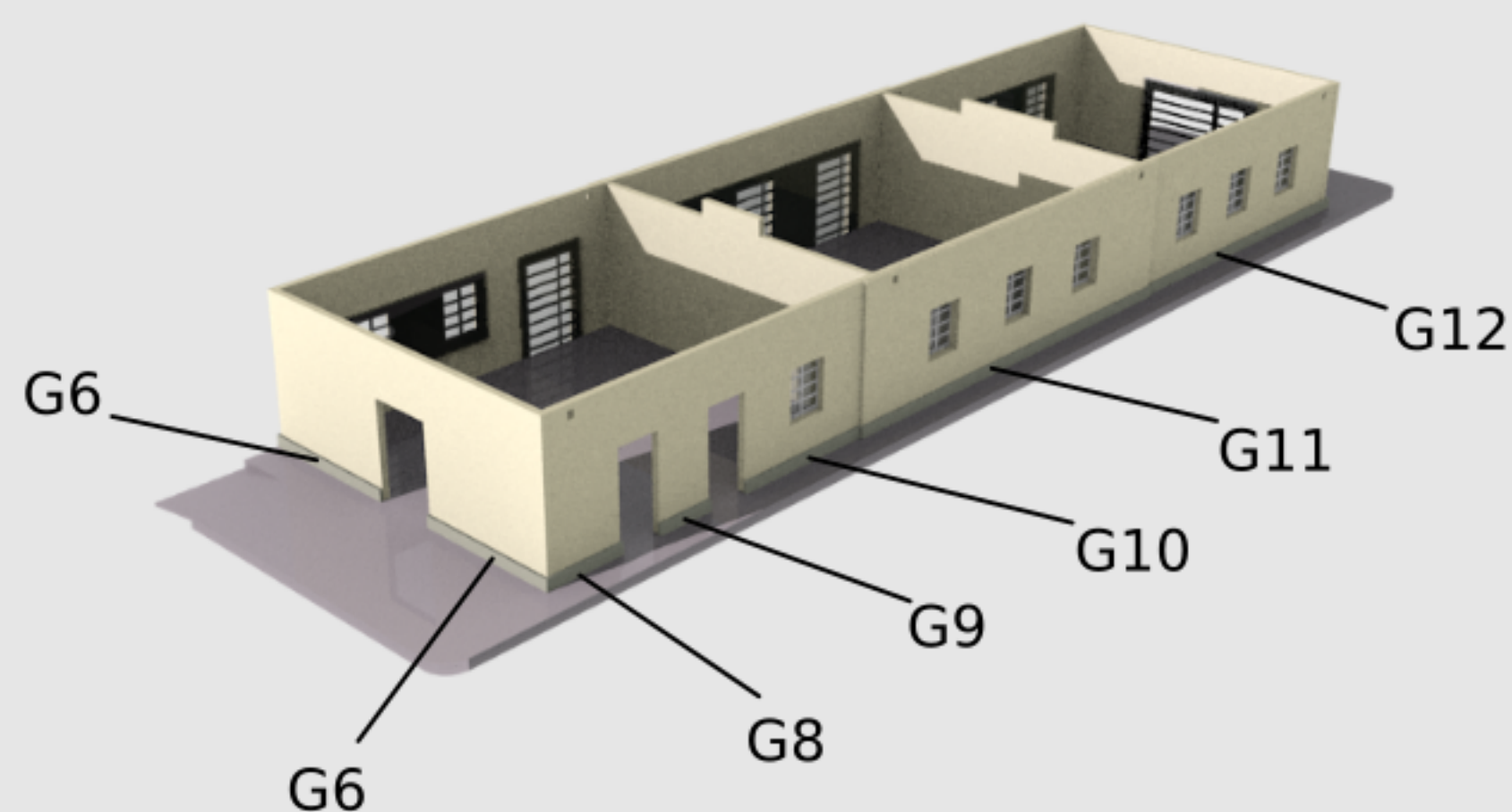
7b



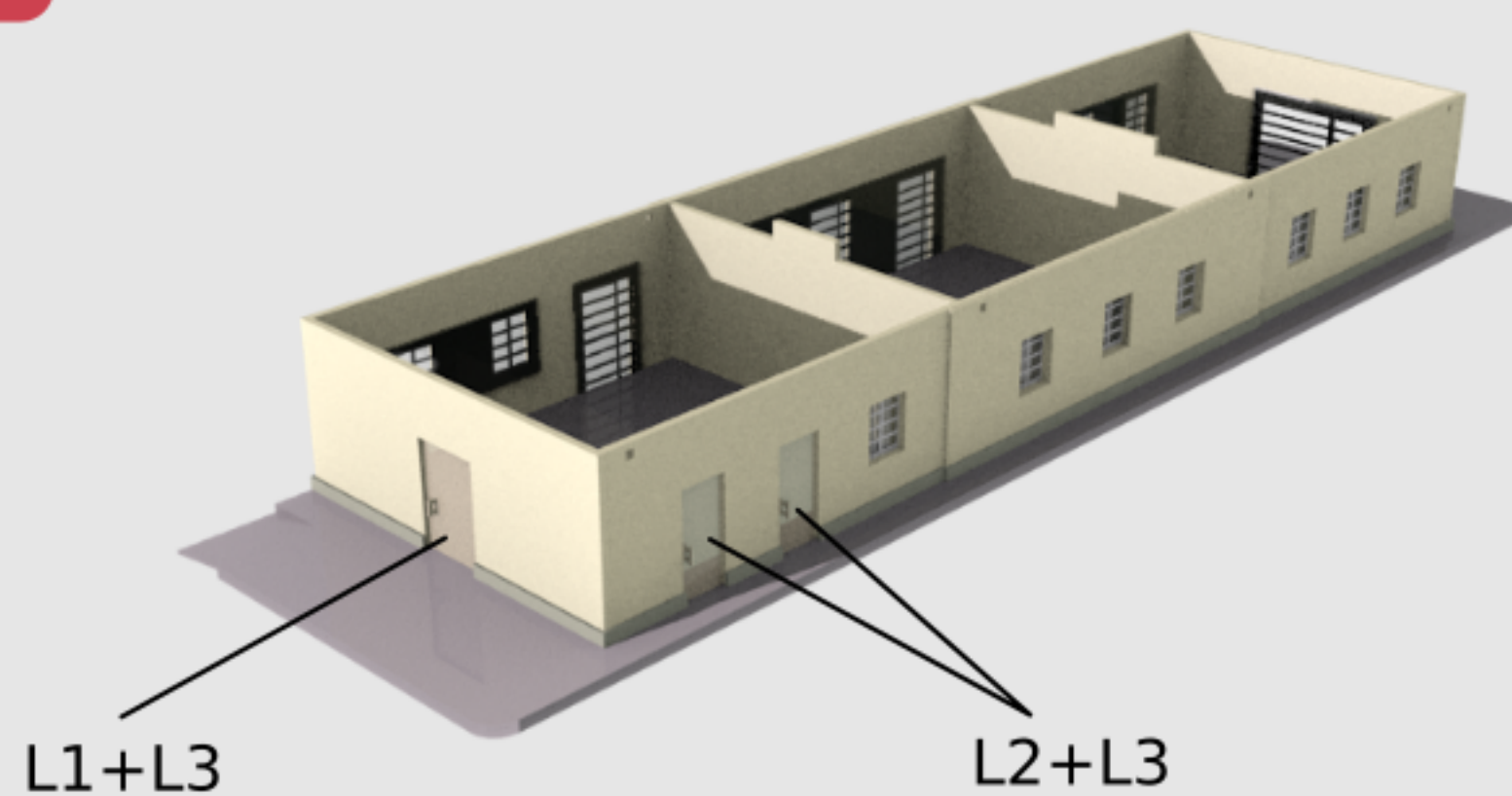
8



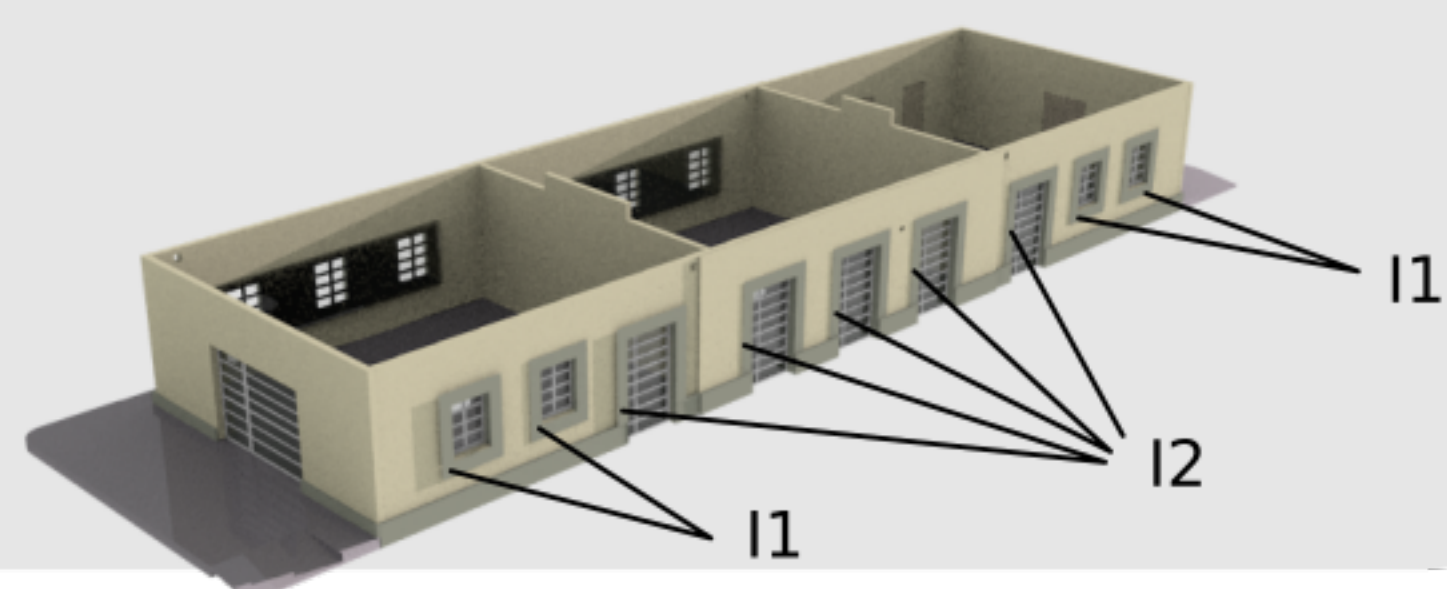
8b



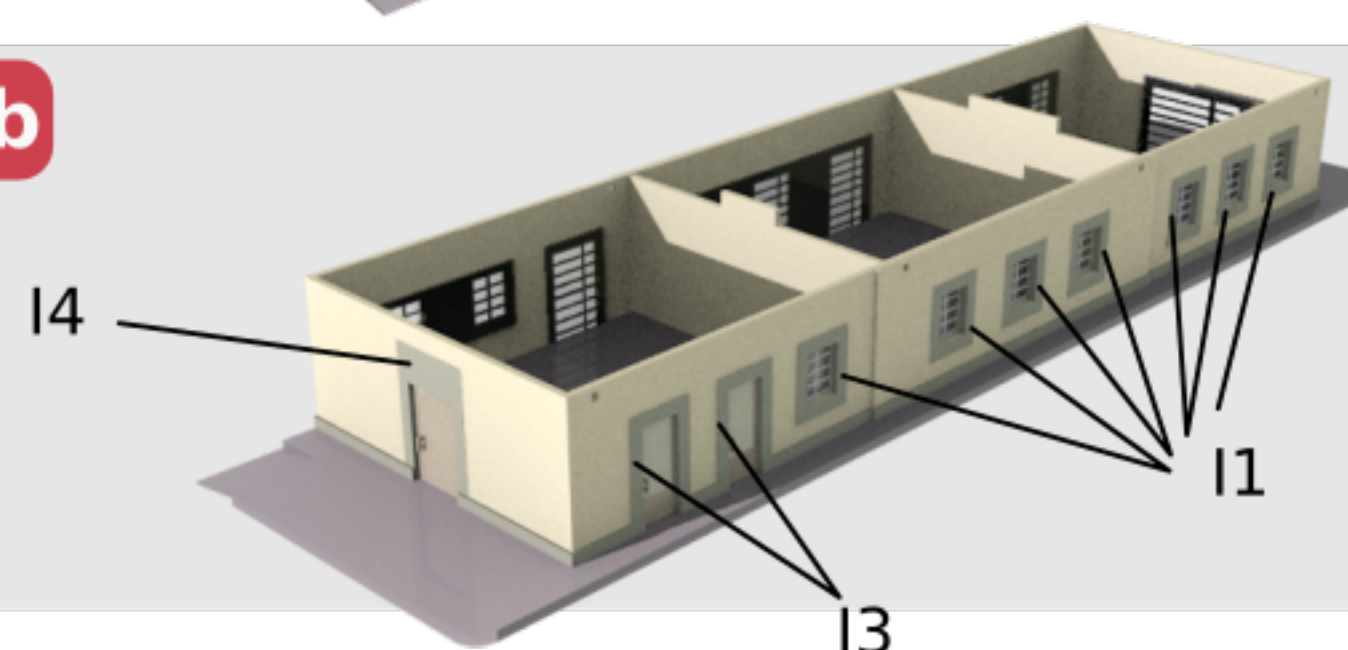
9



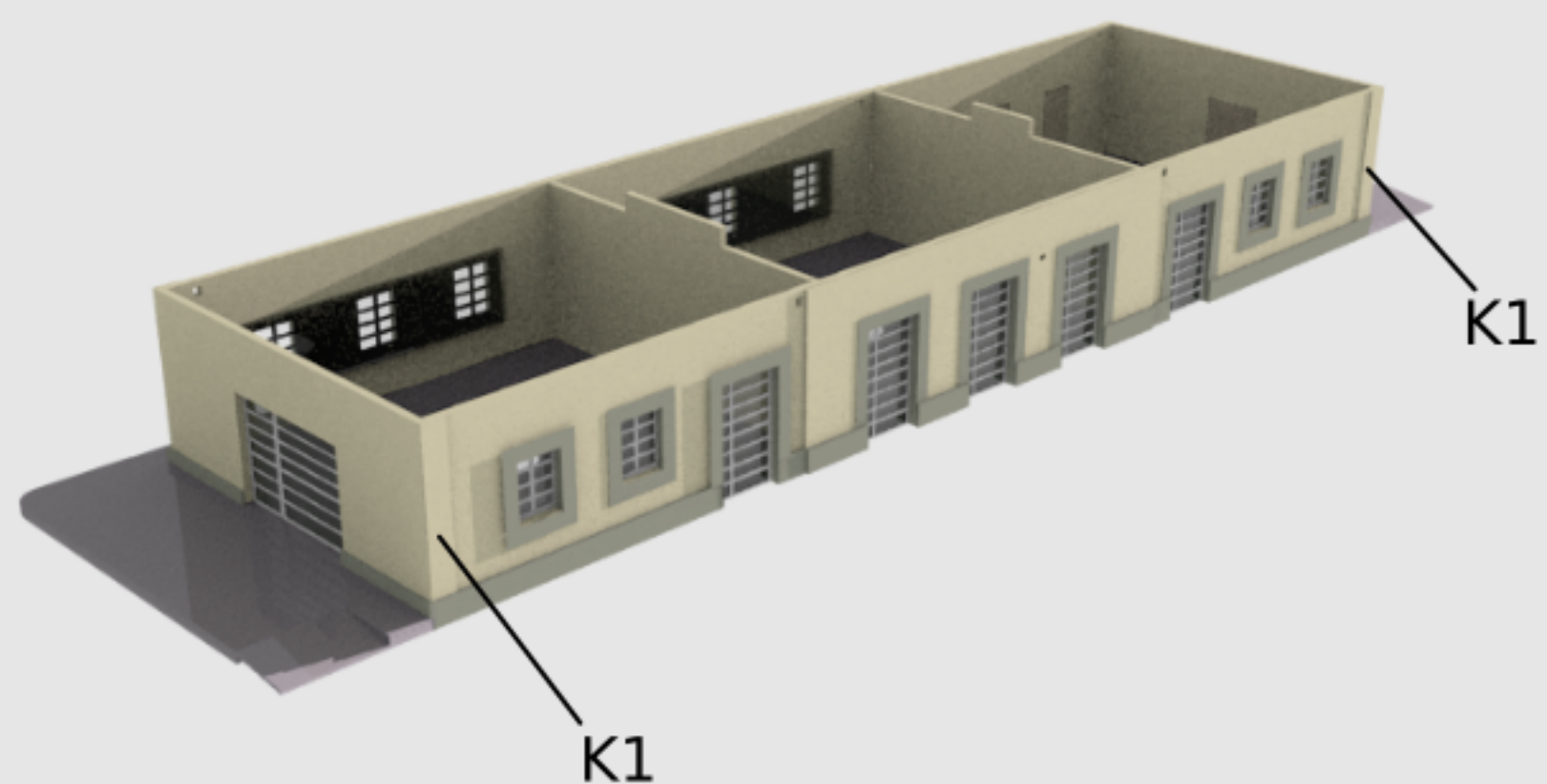
10



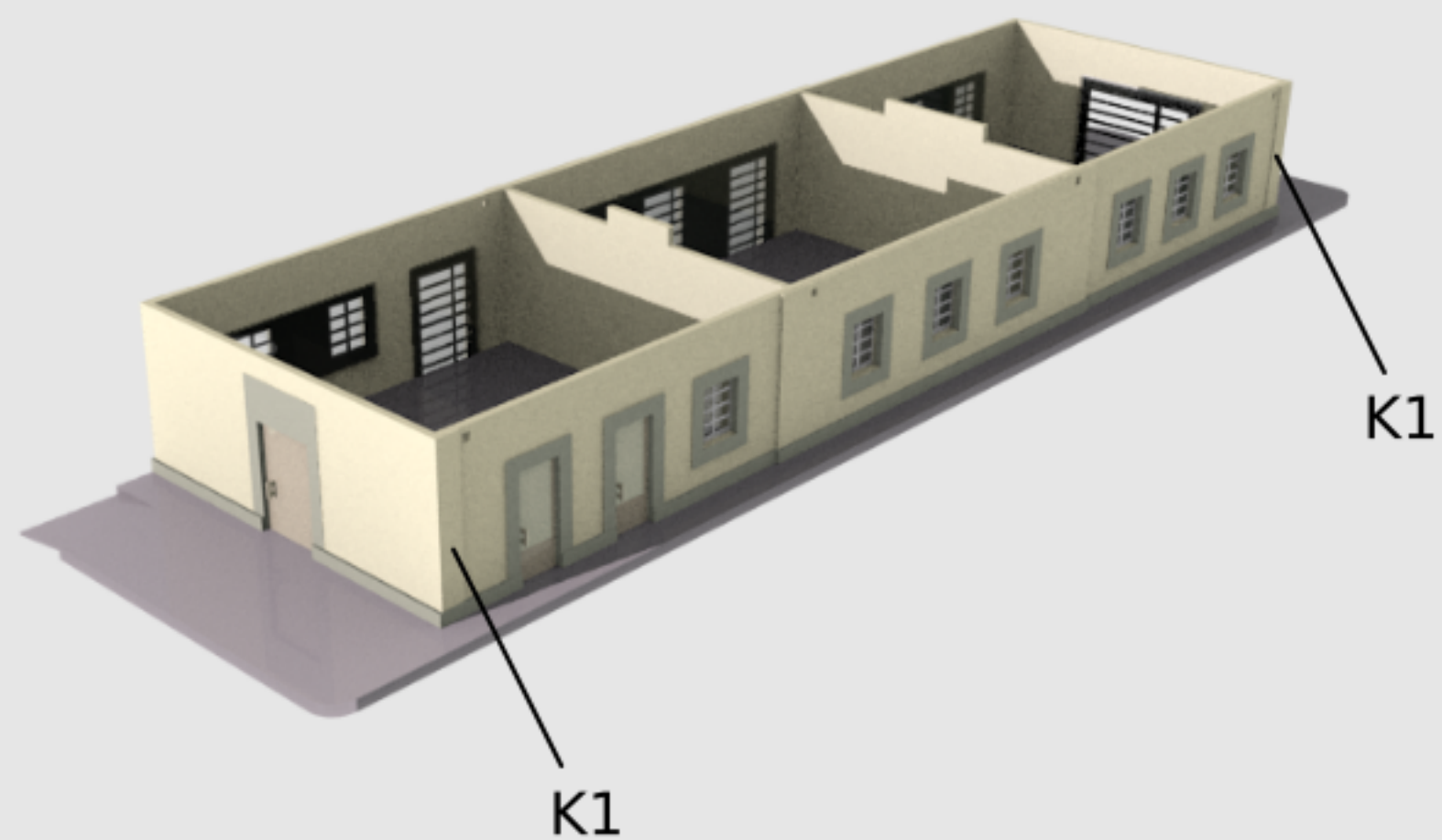
10b



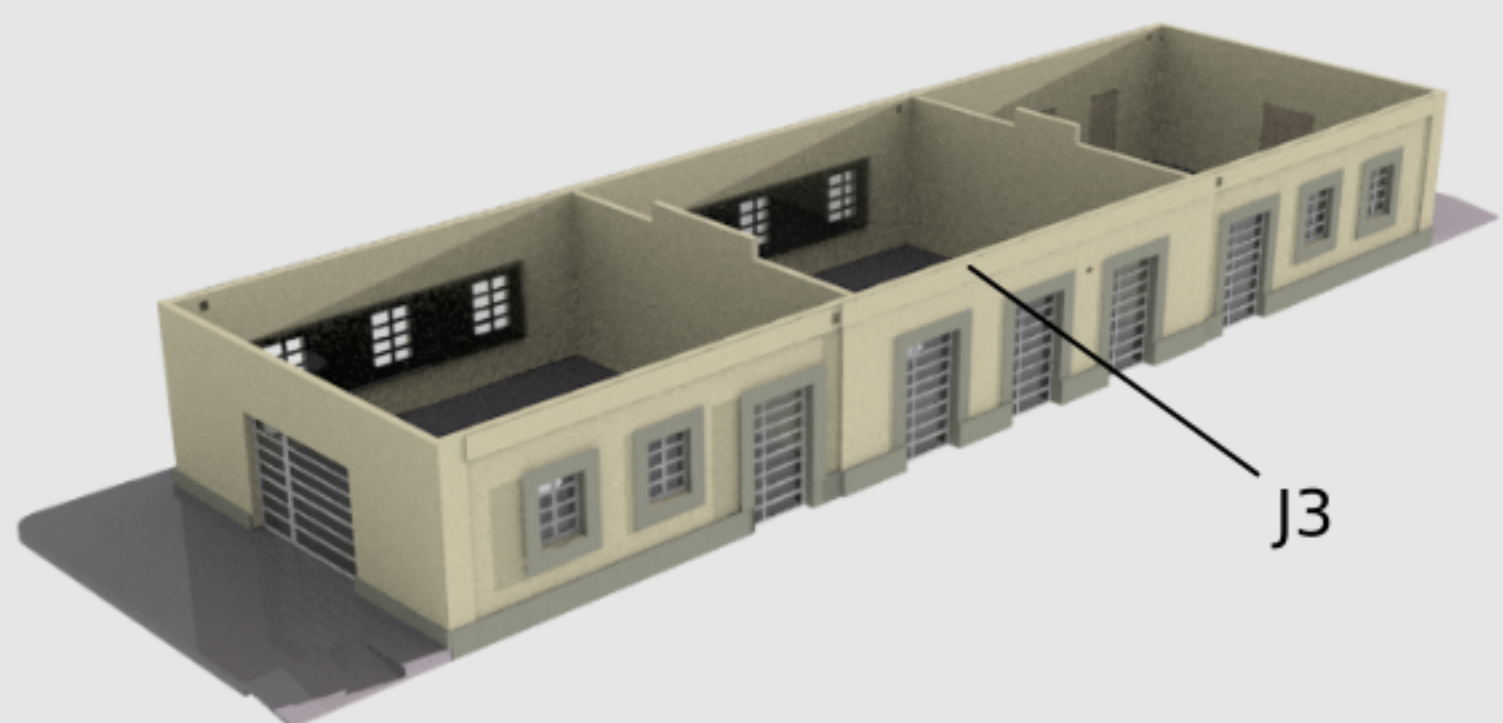
11



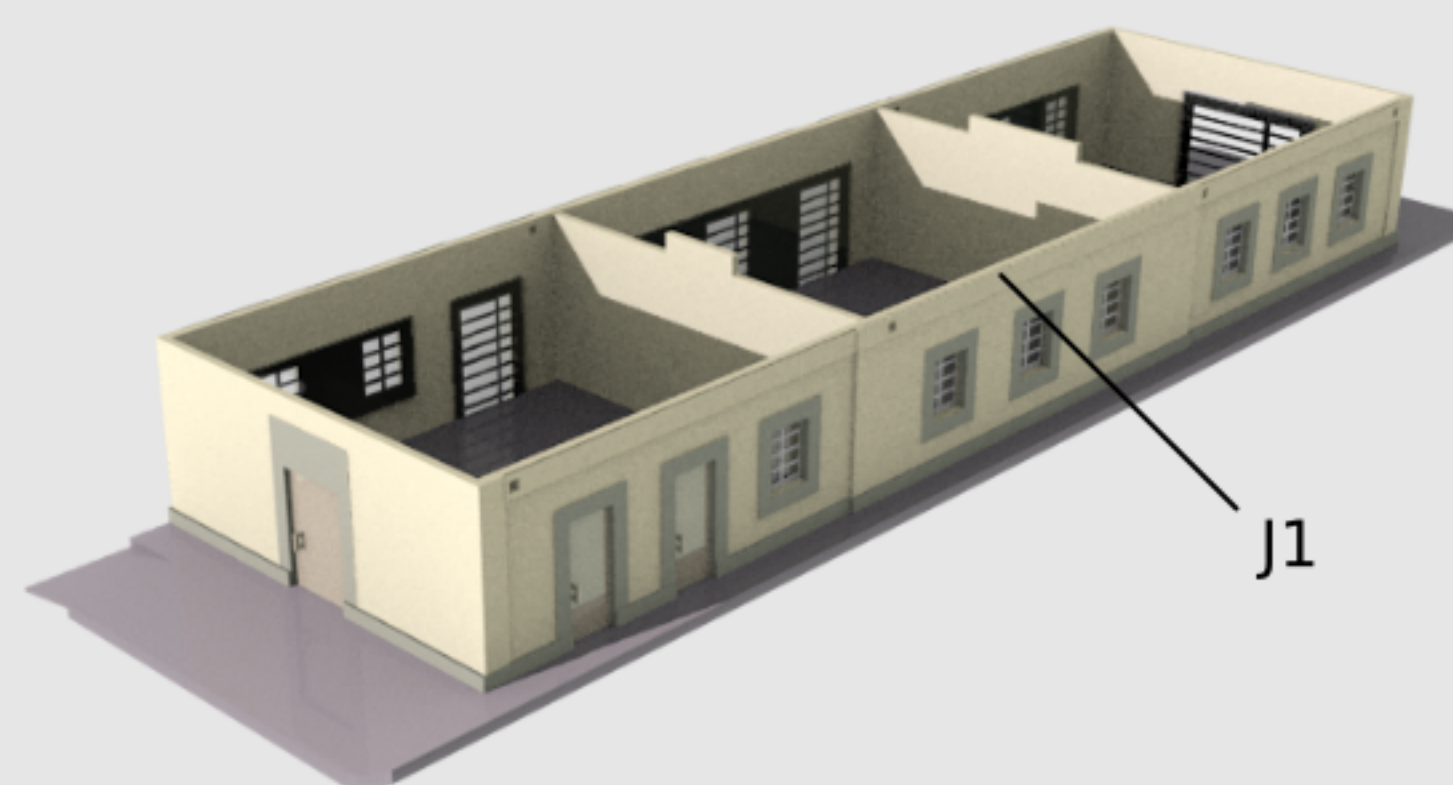
11b



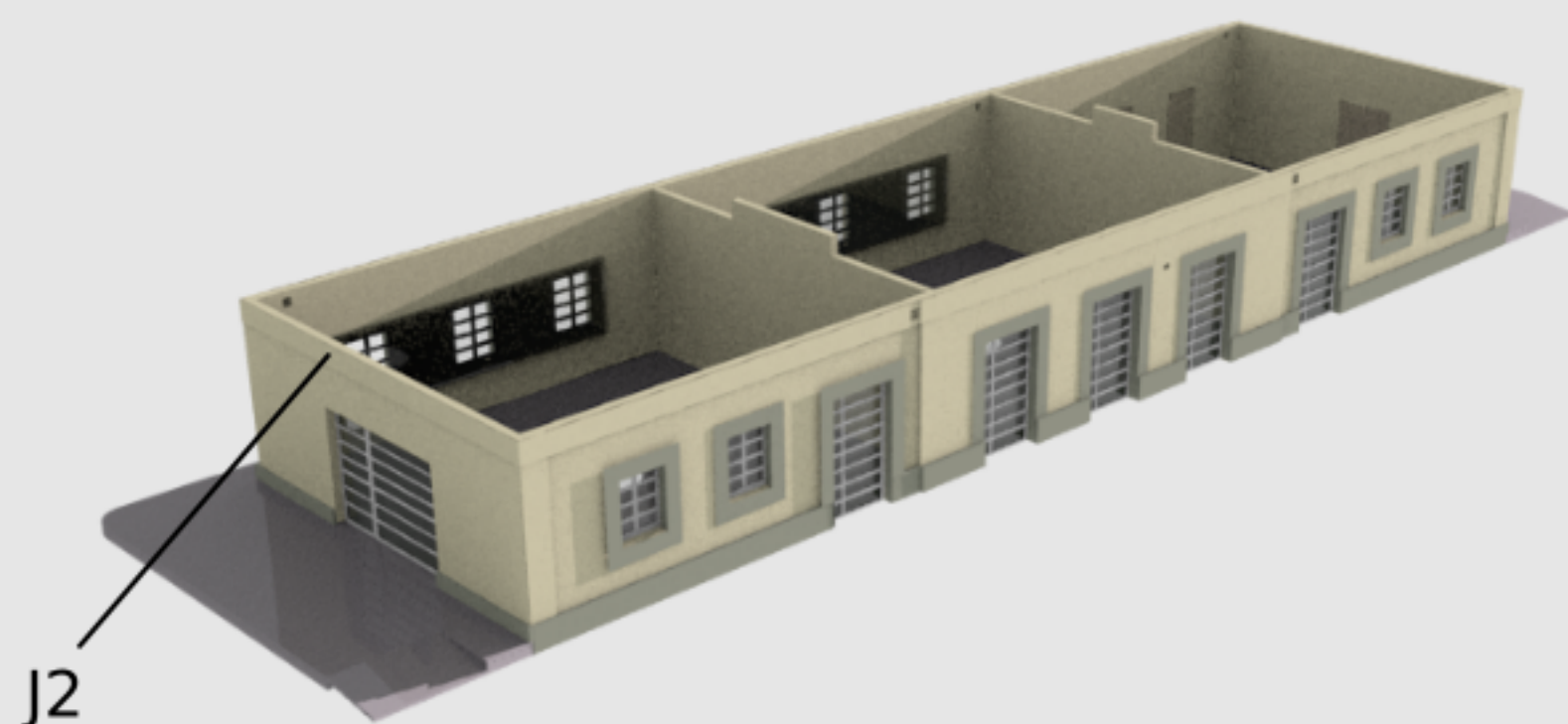
12



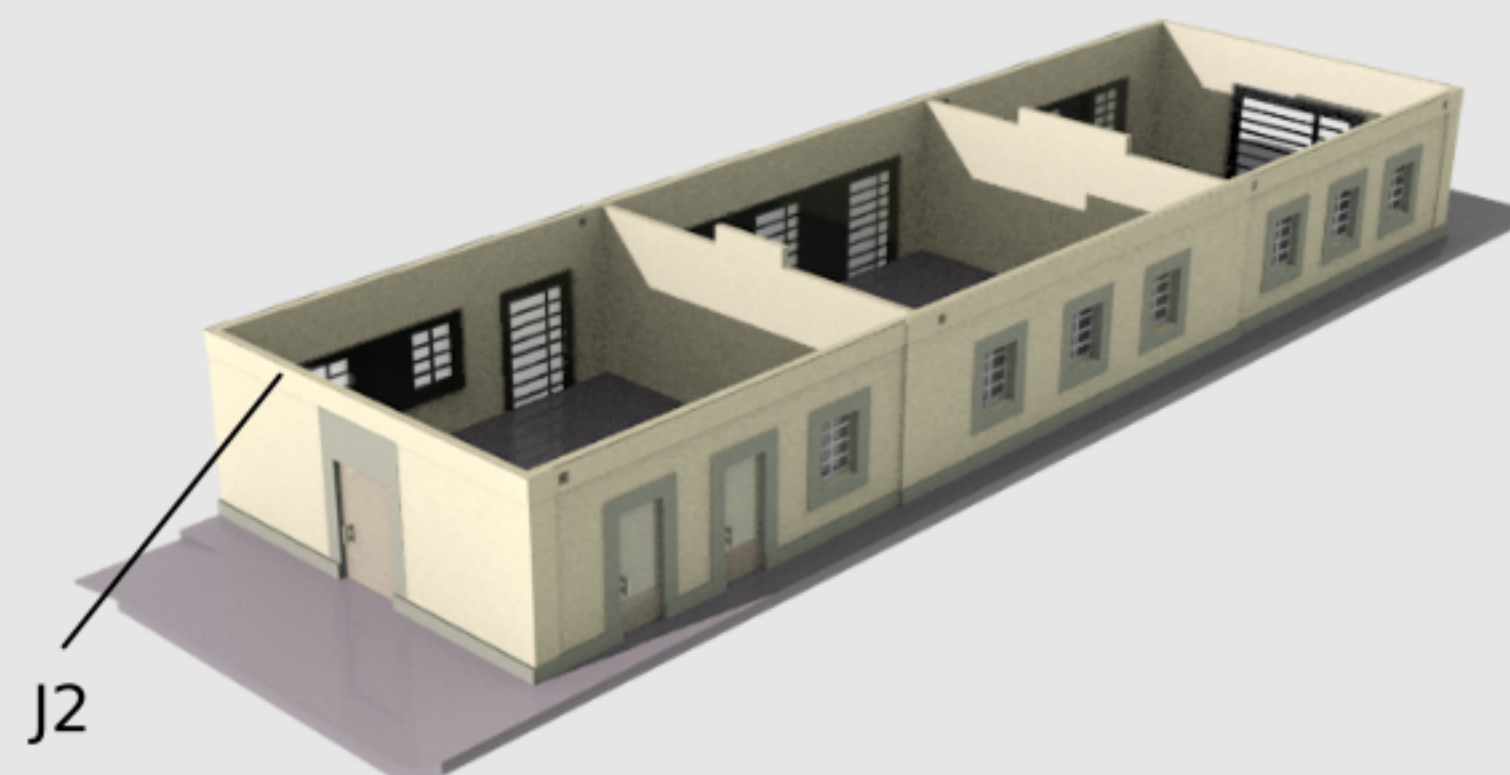
12b



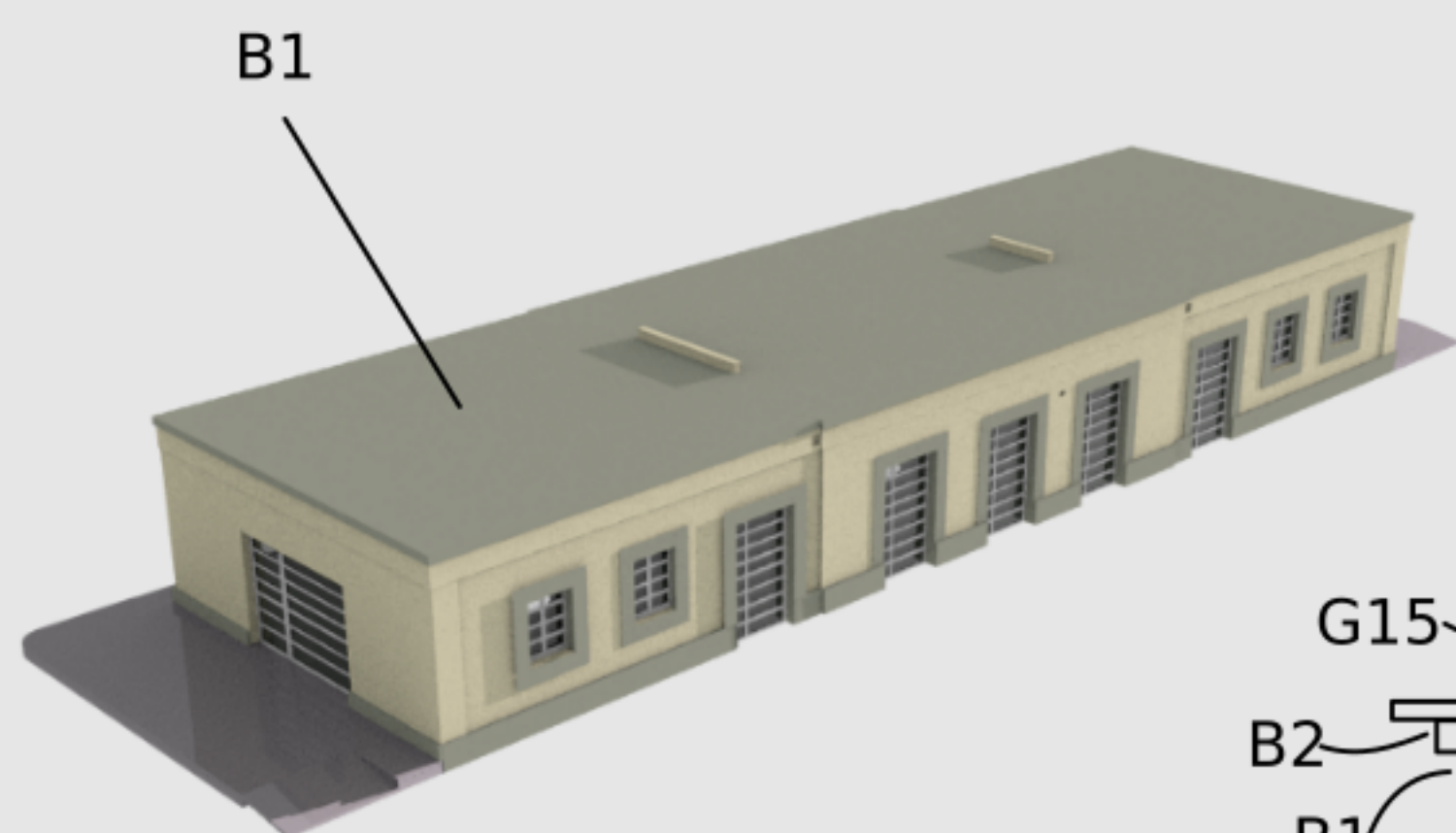
13



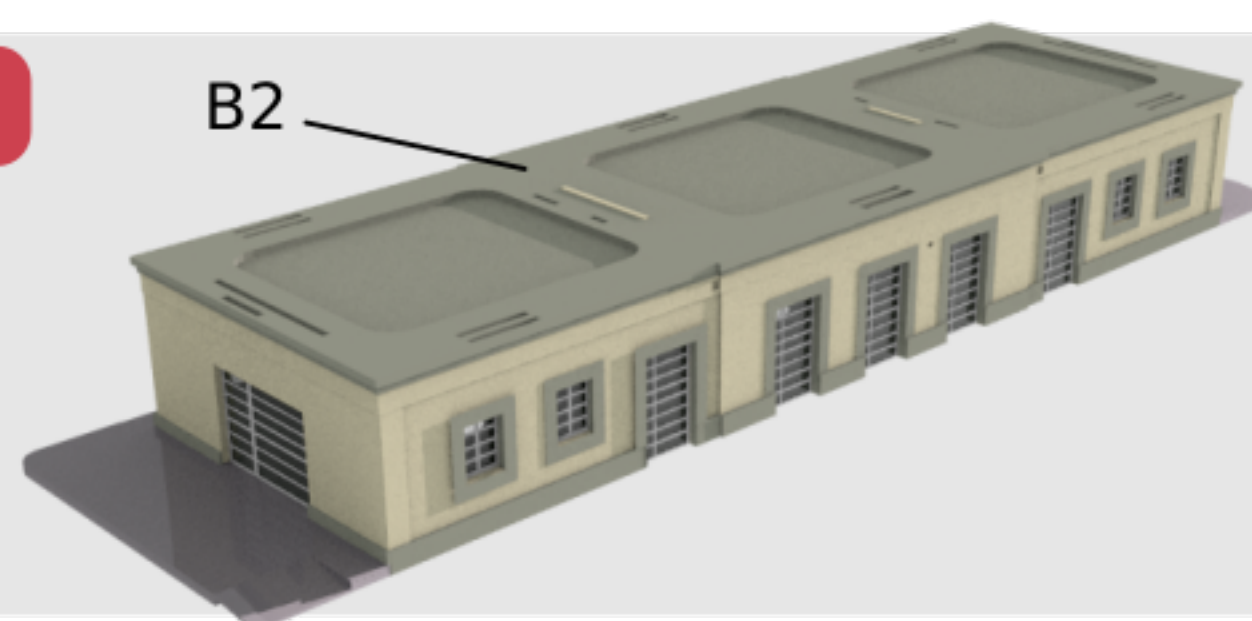
13b



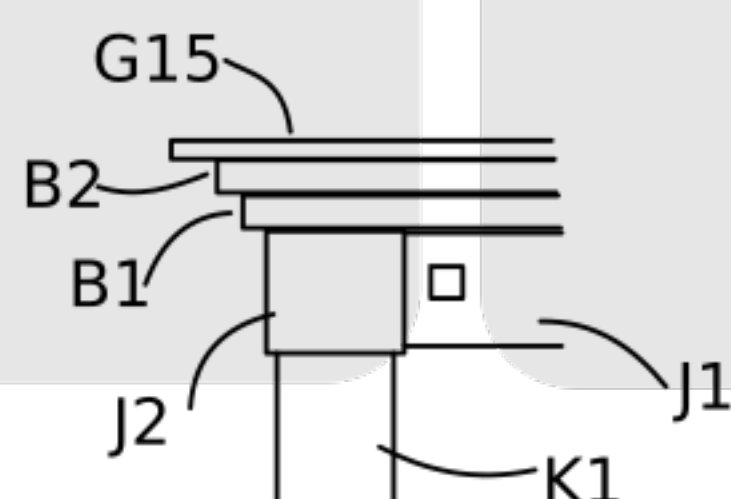
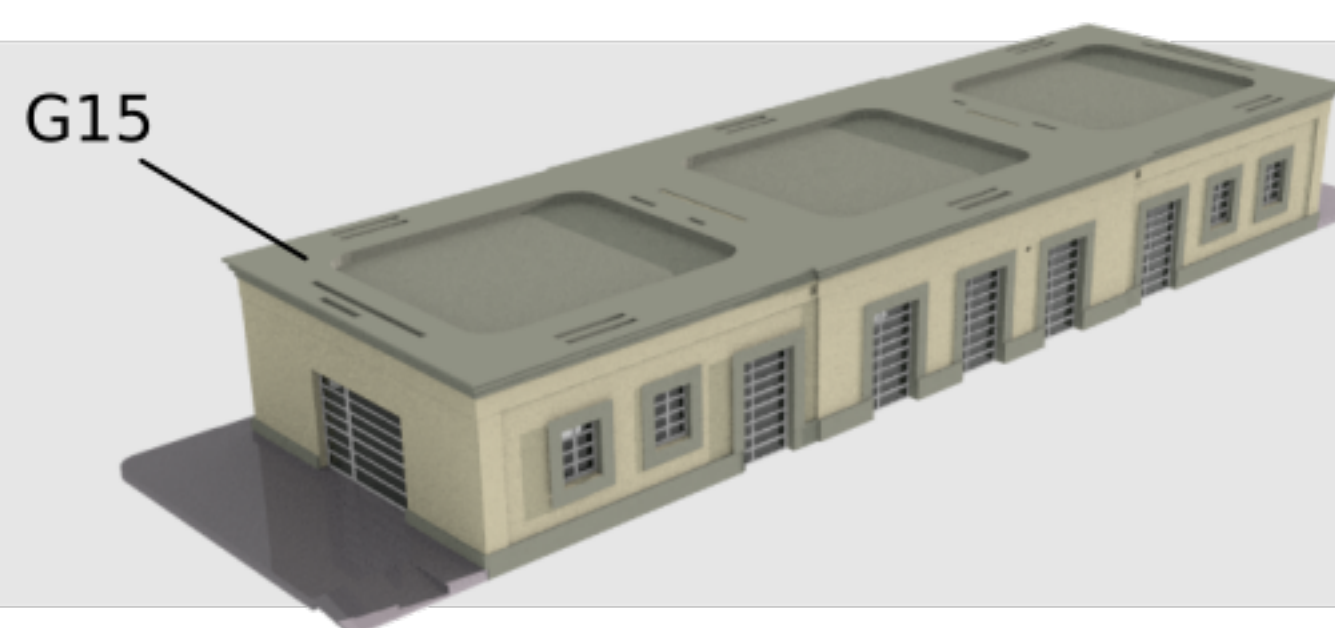
14



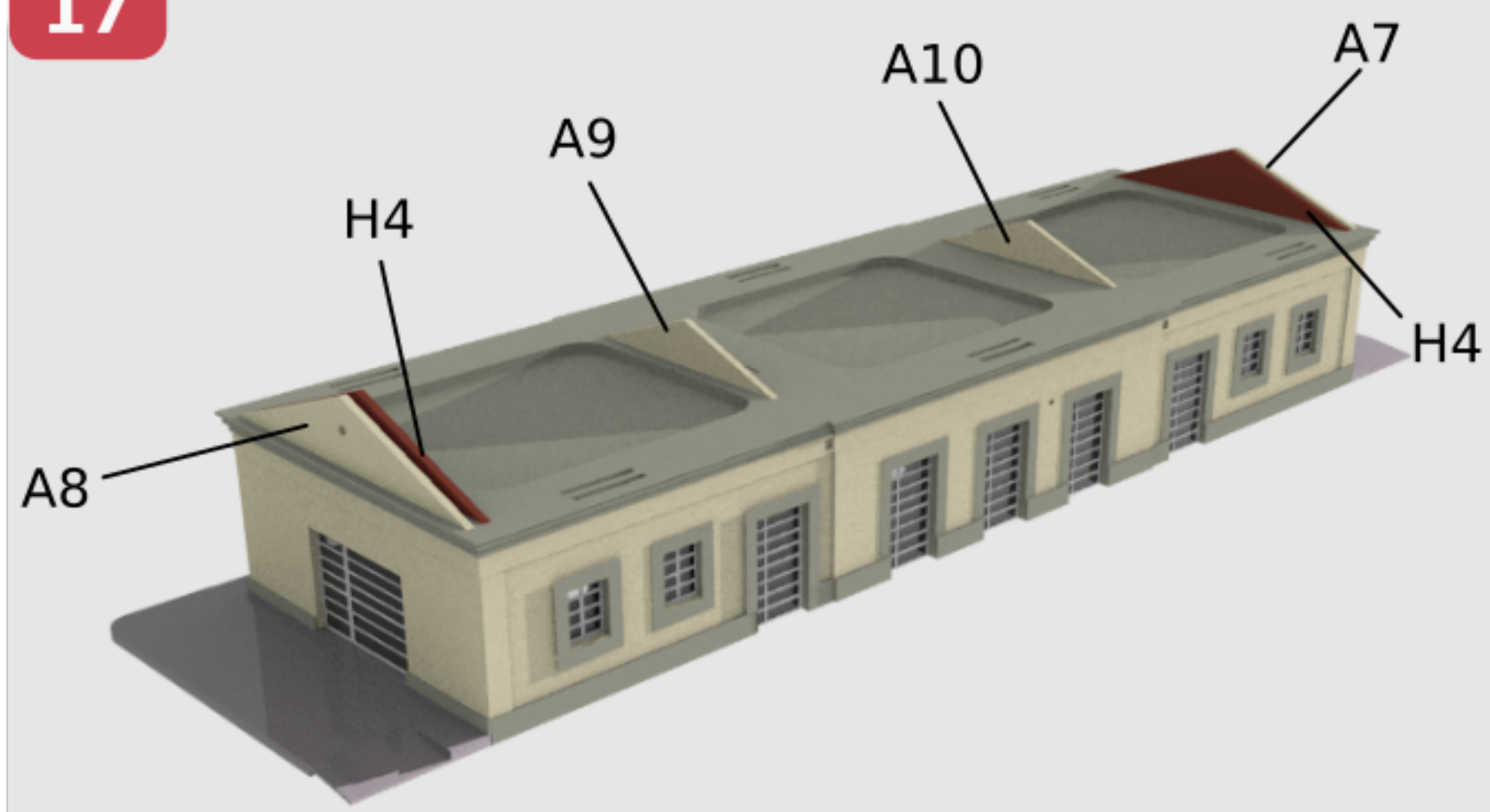
15



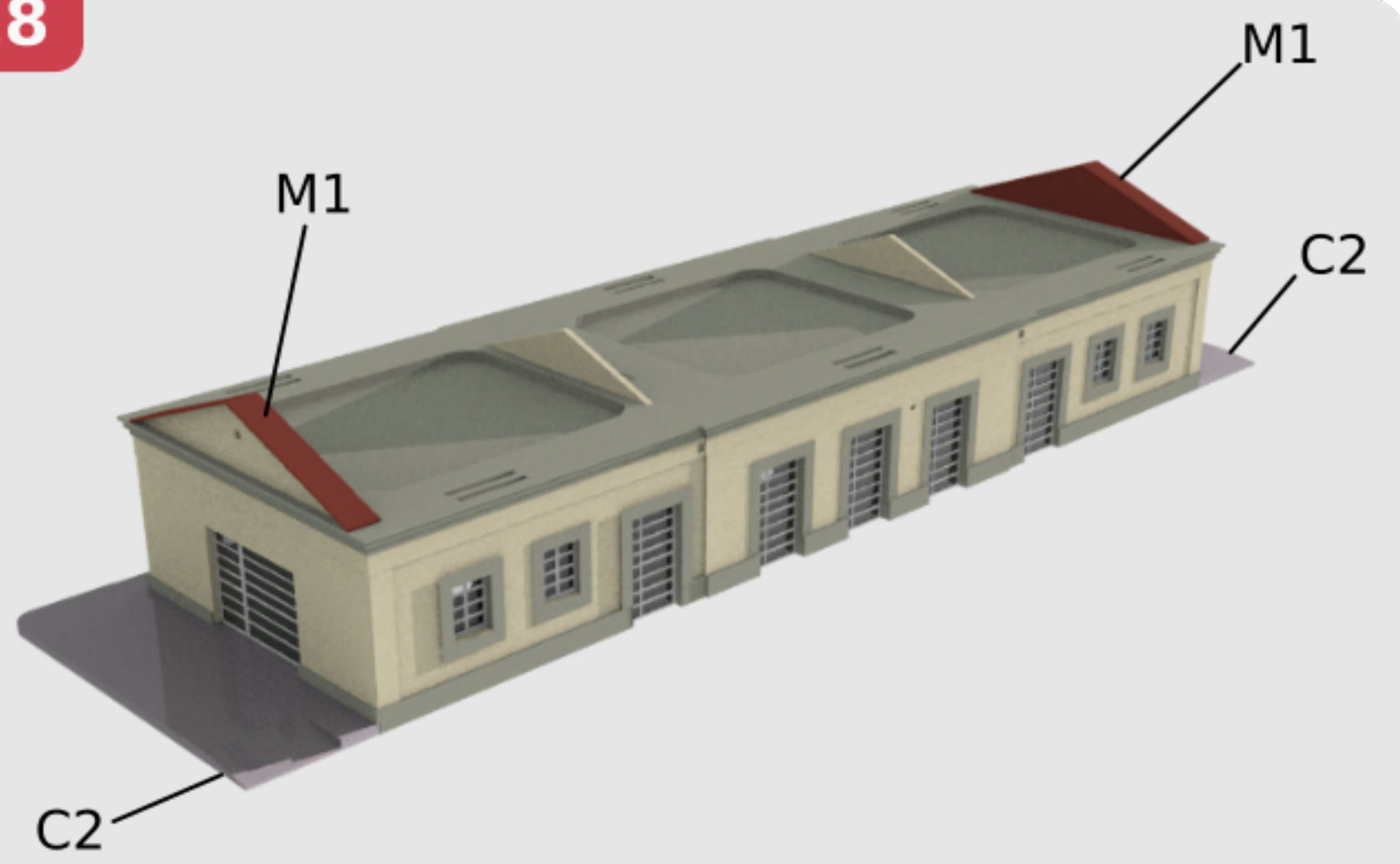
16



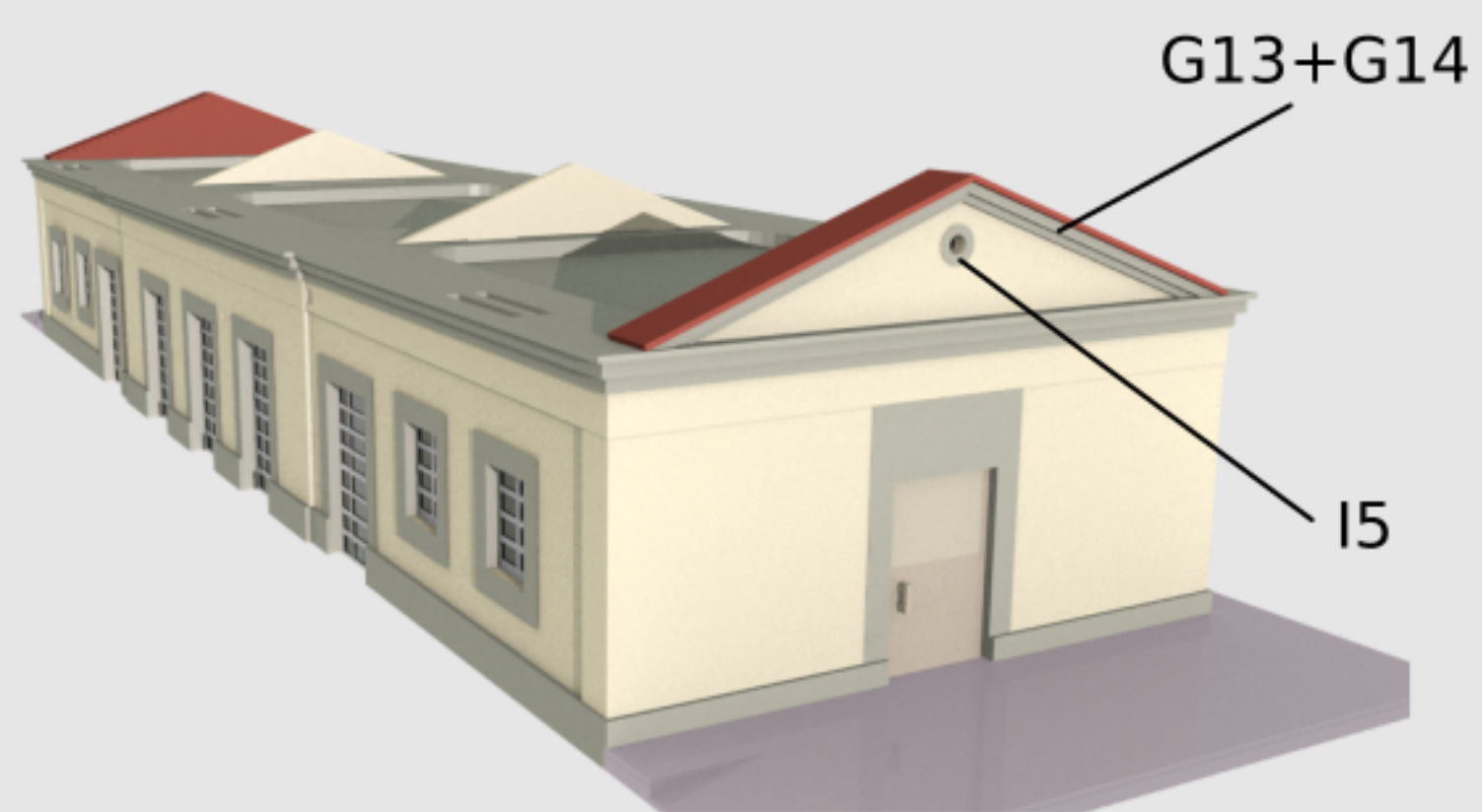
17



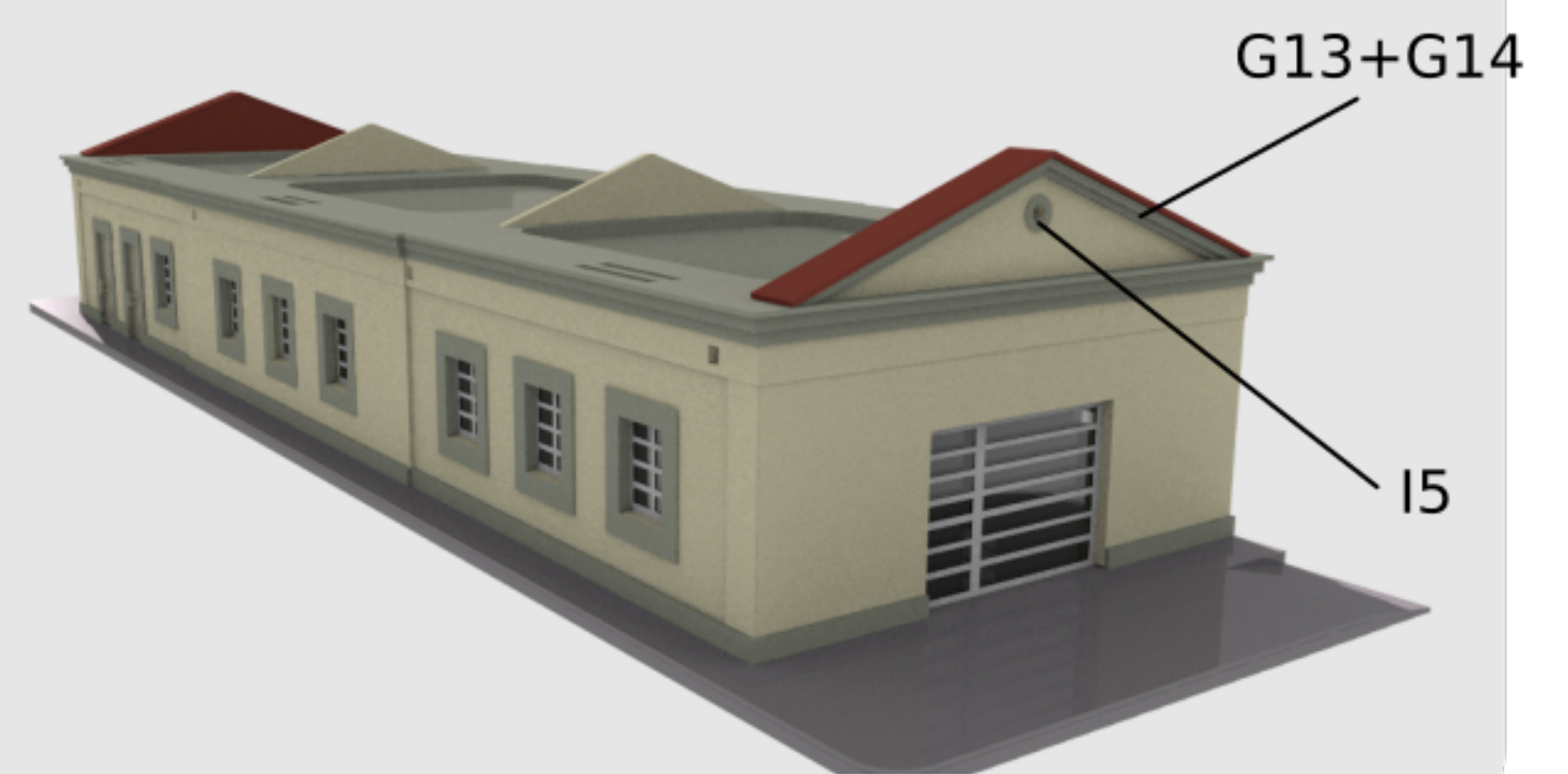
18



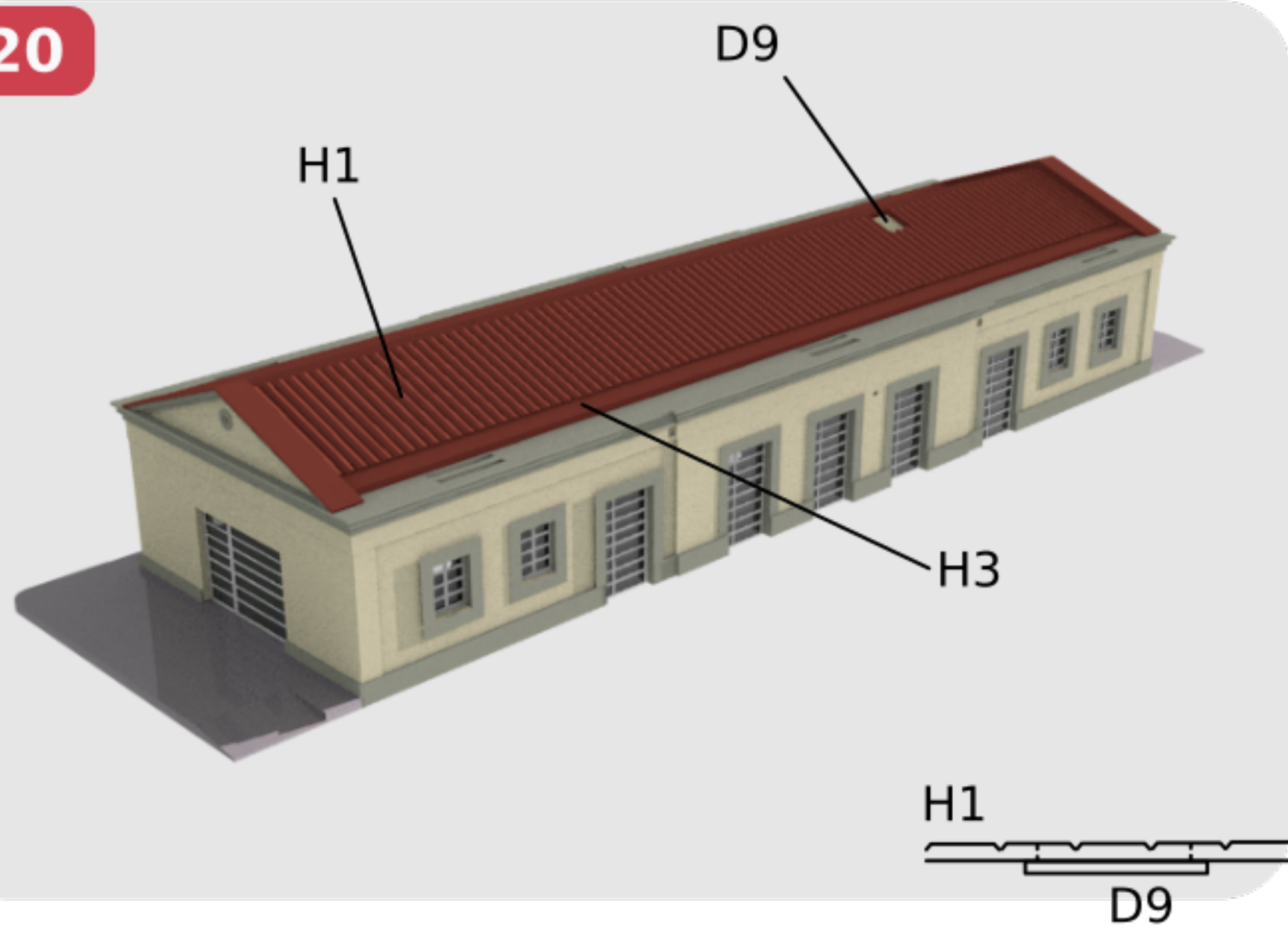
19



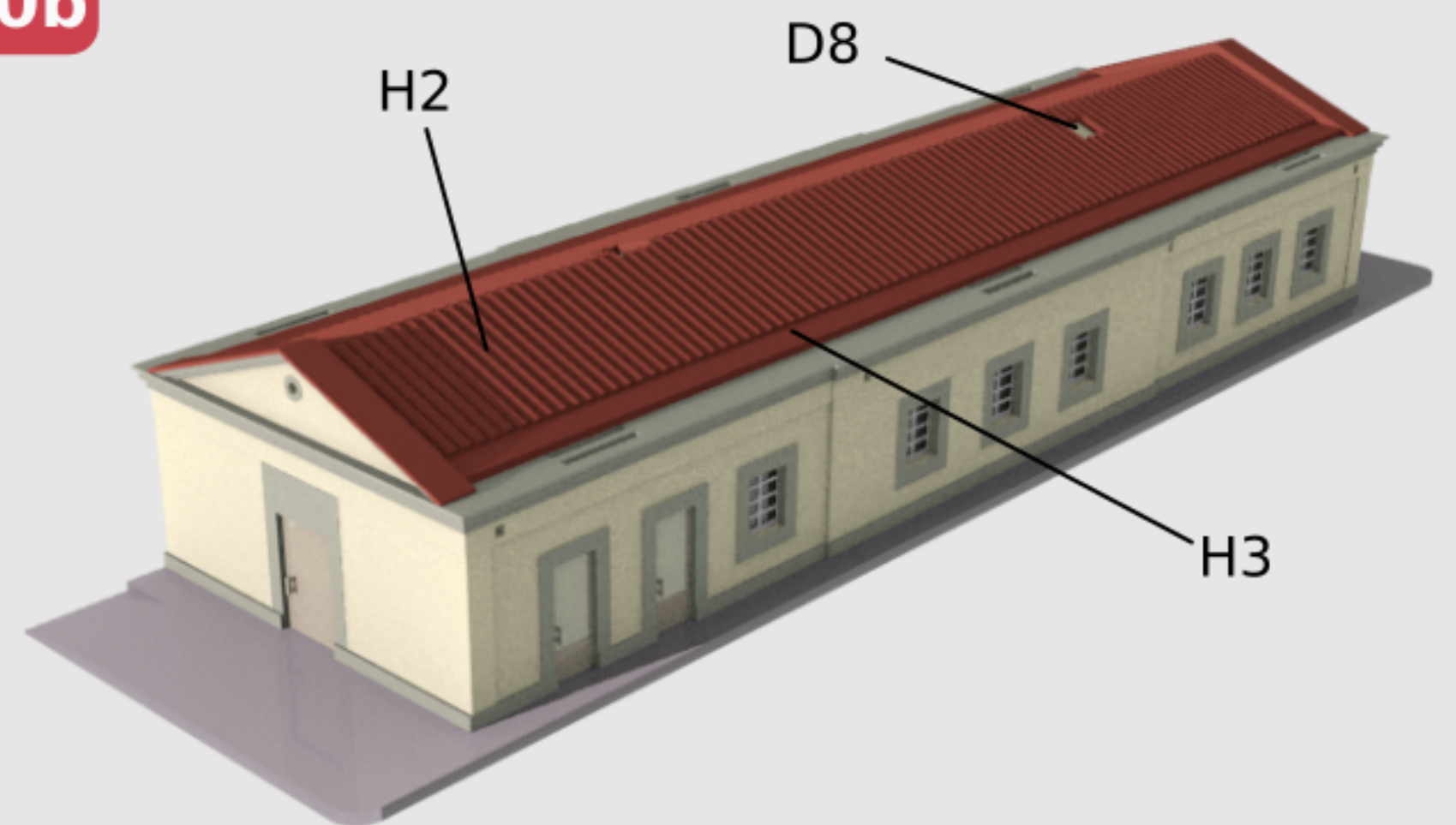
19b



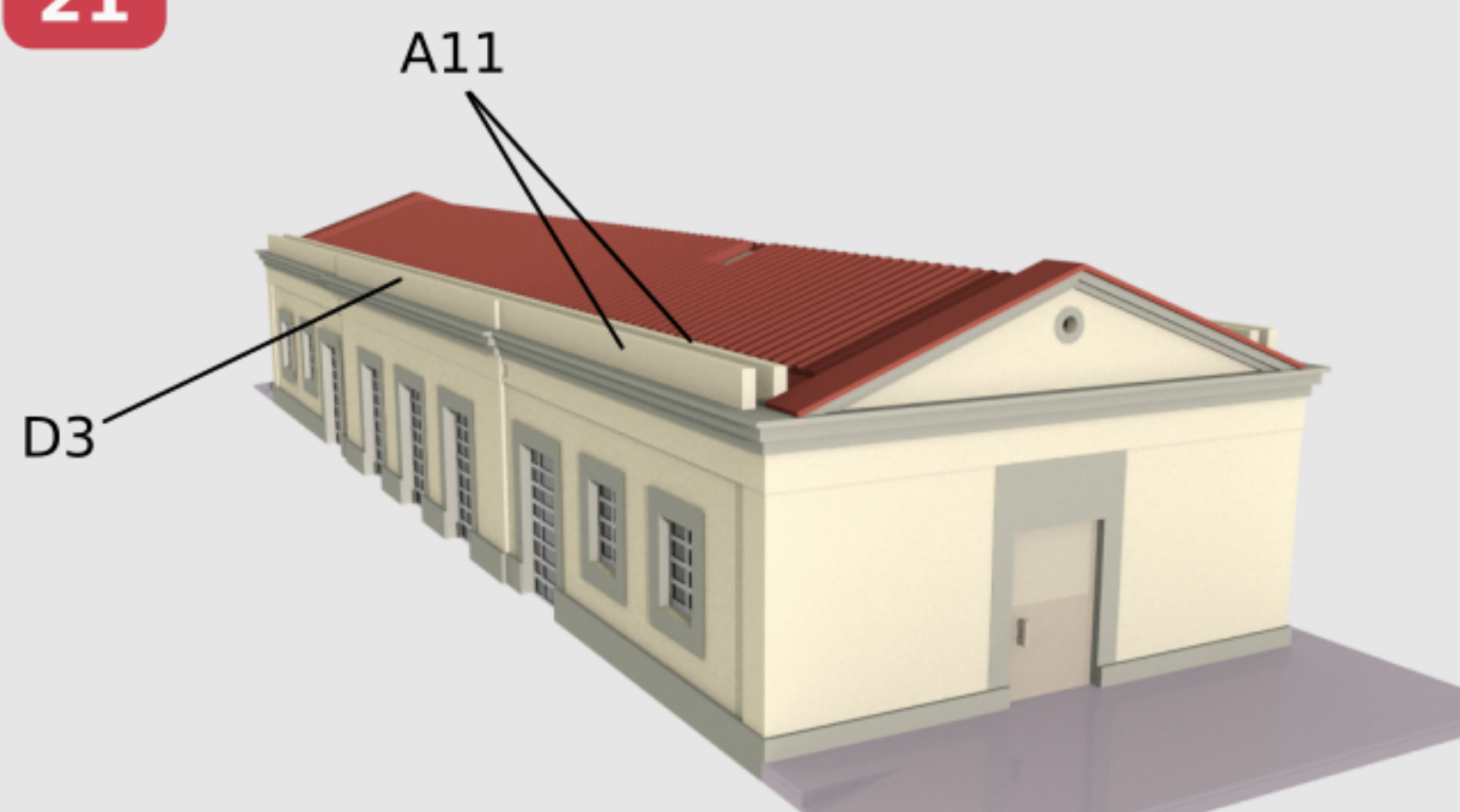
20



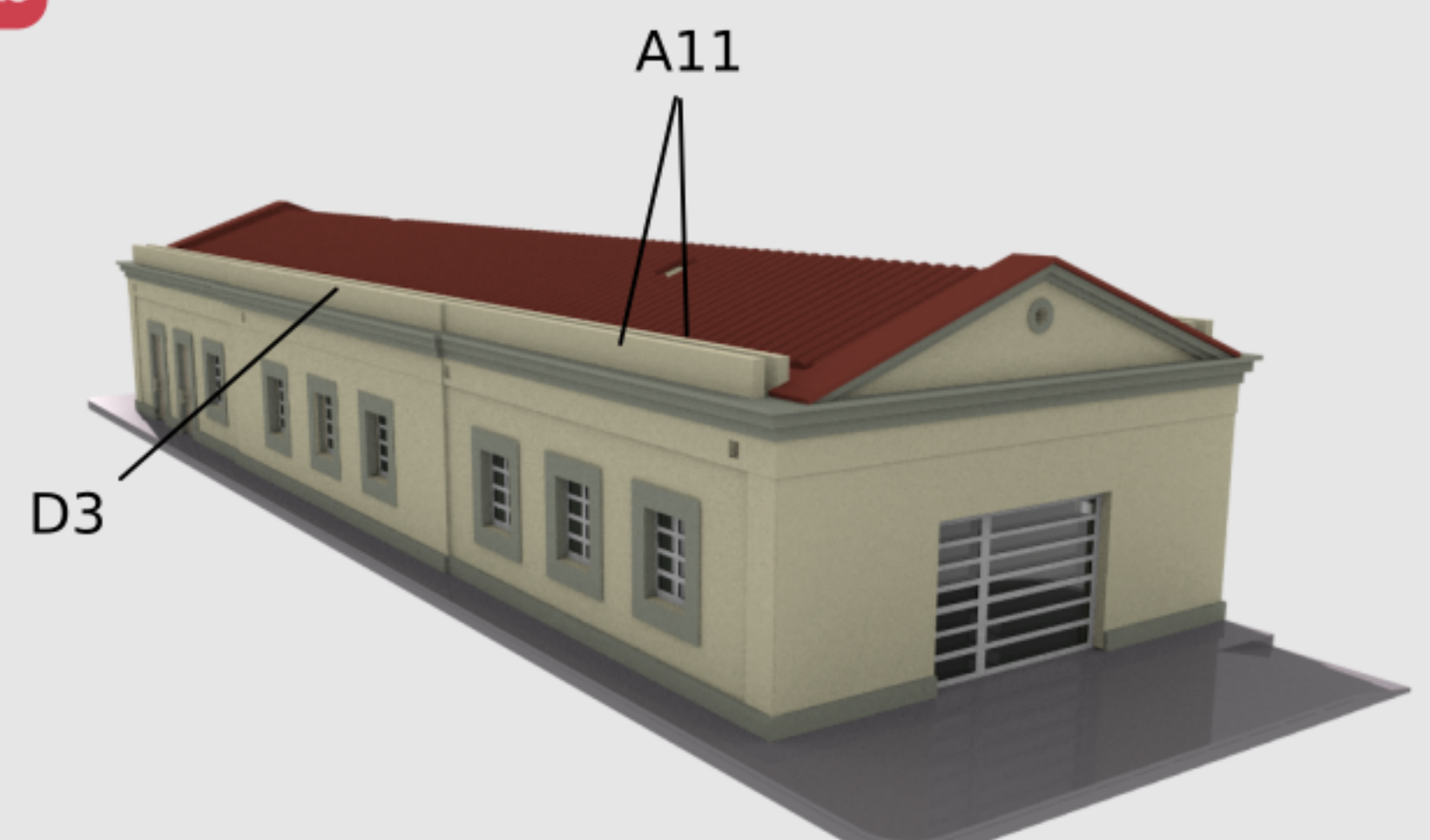
20b

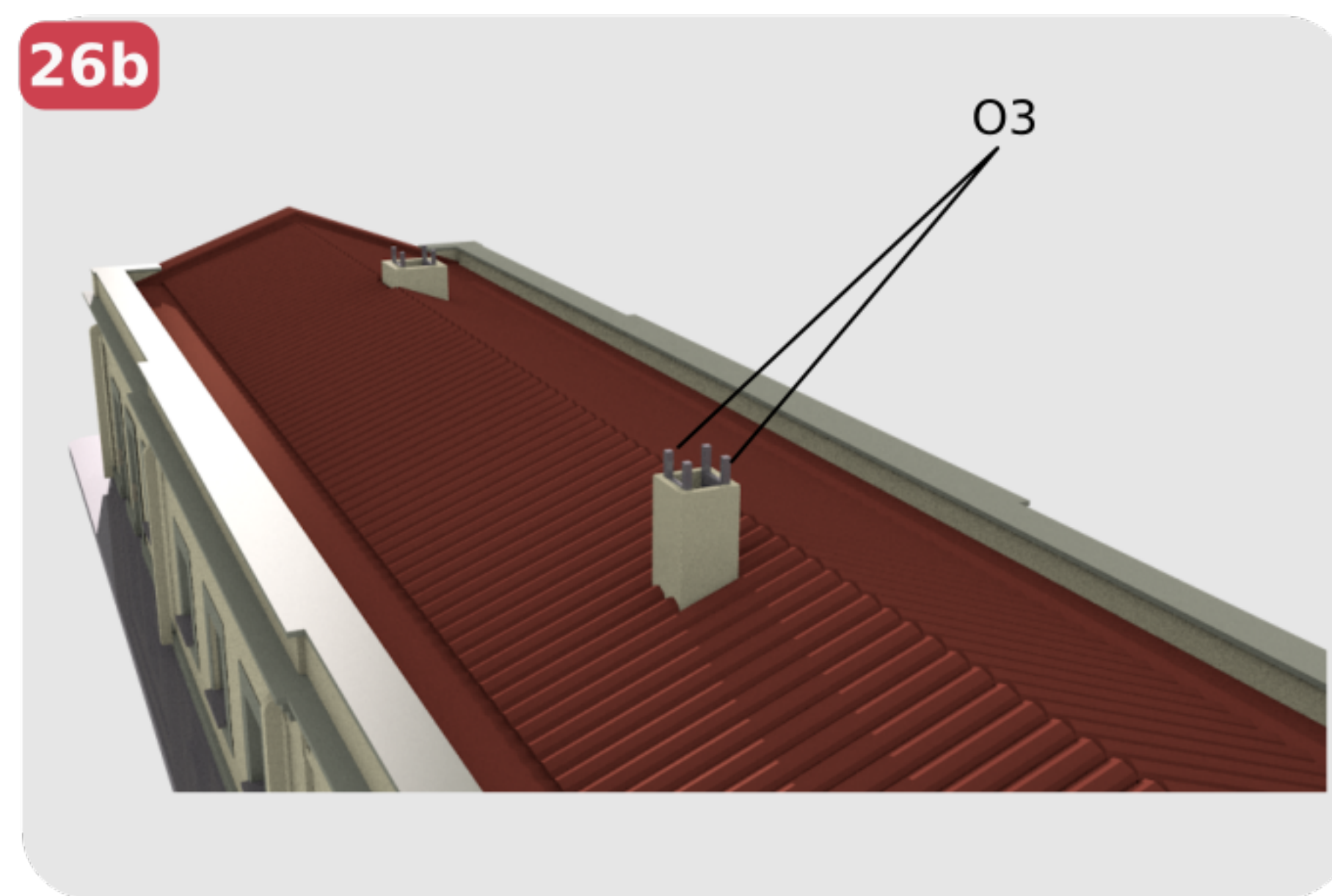
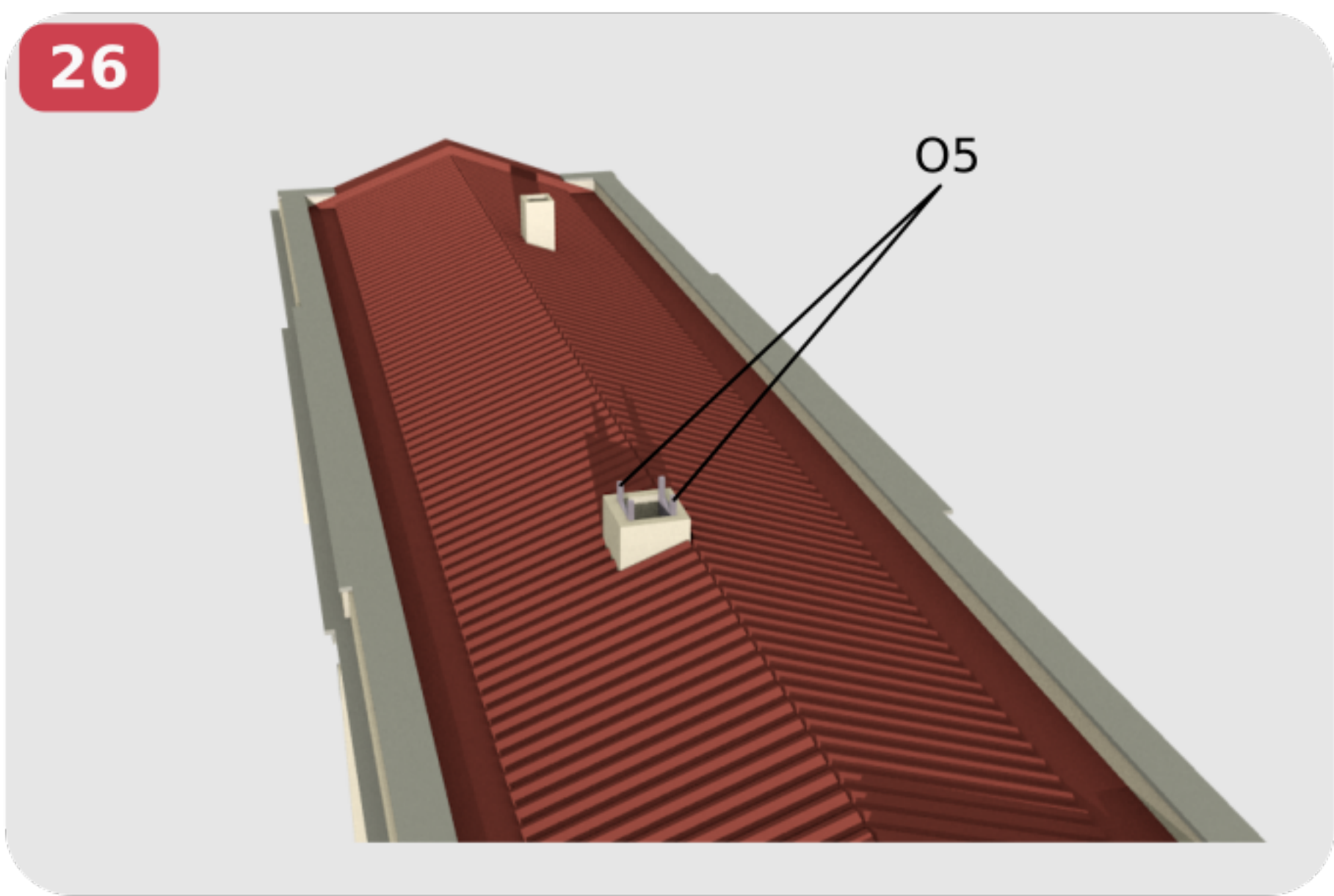
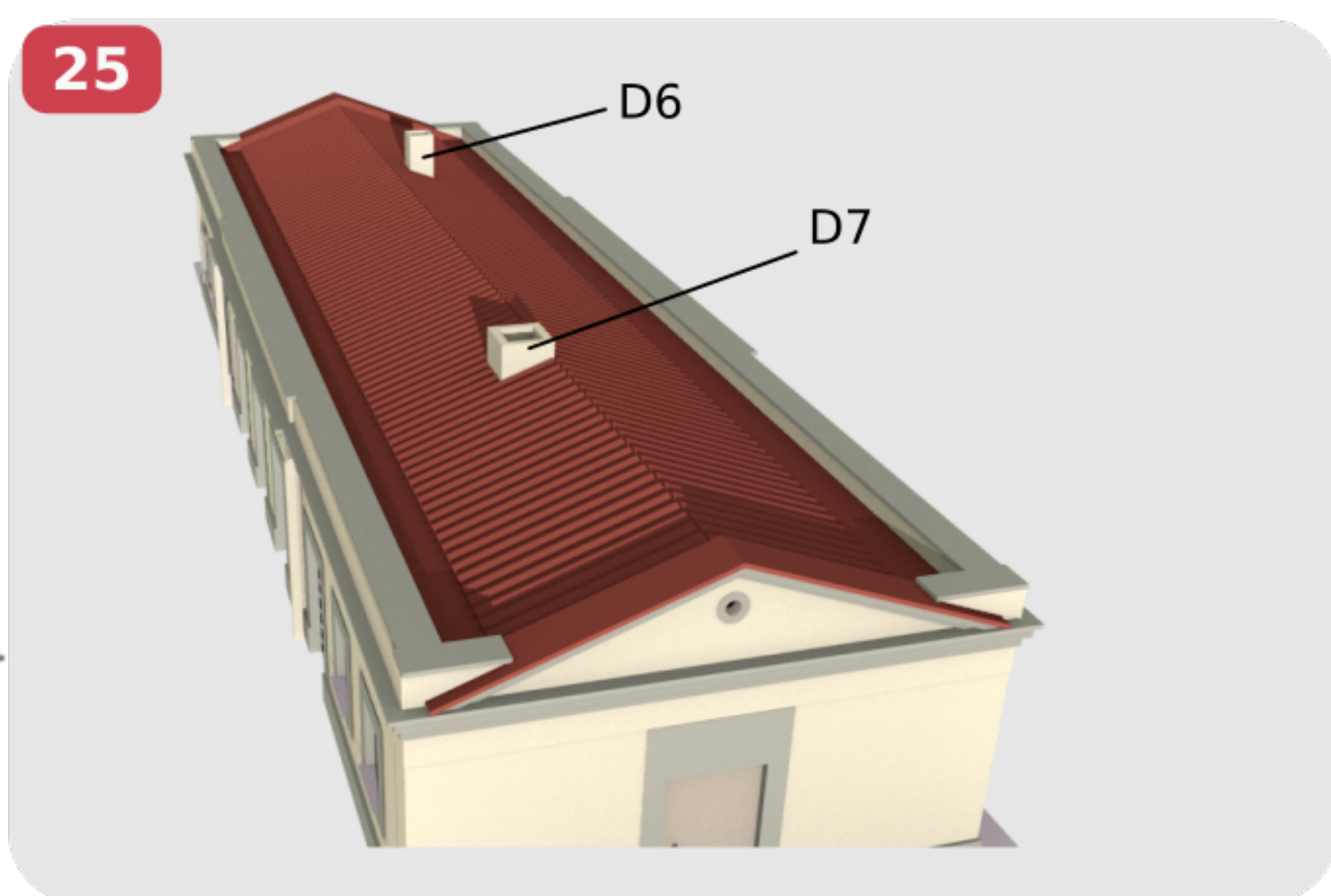
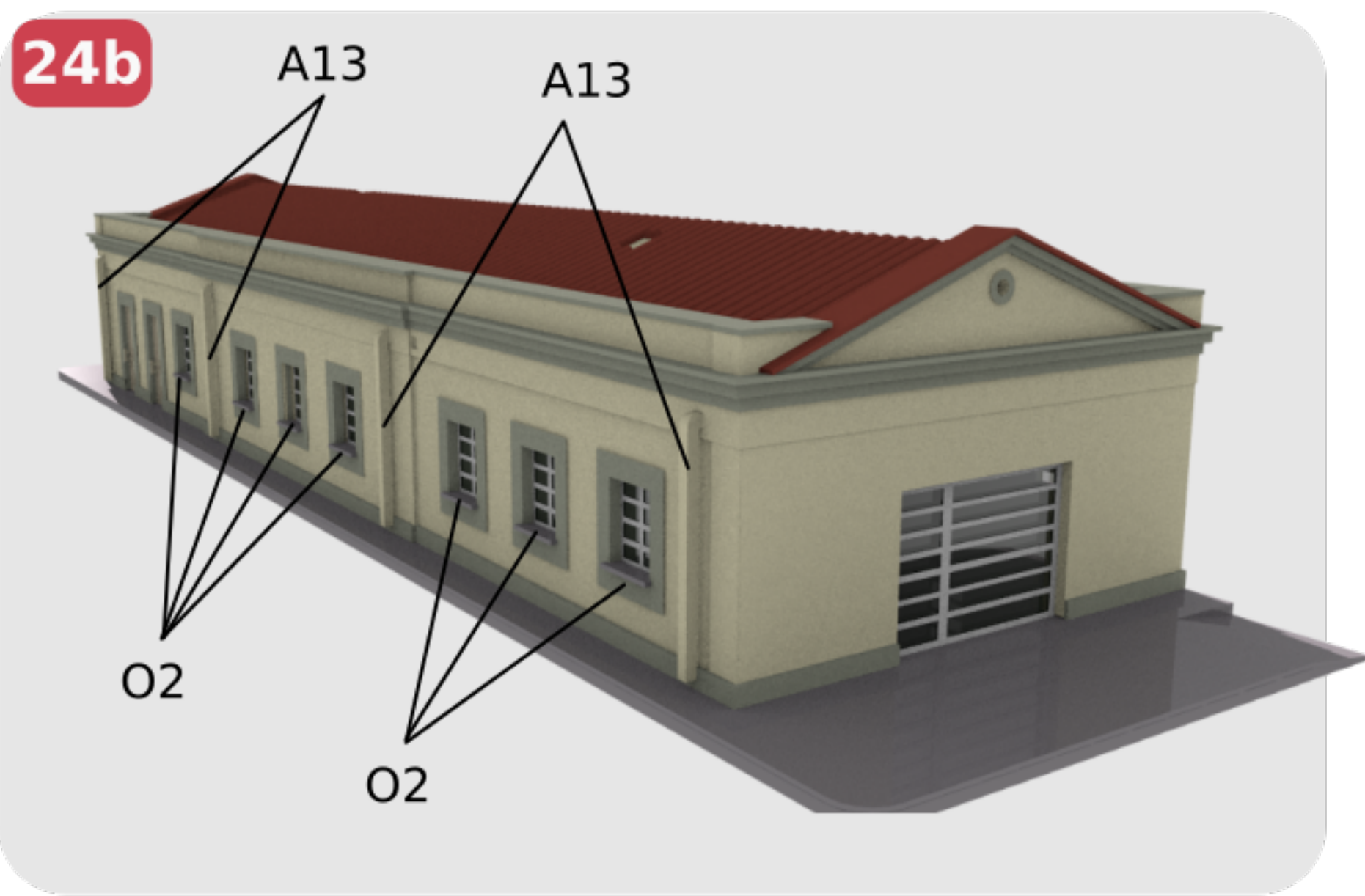
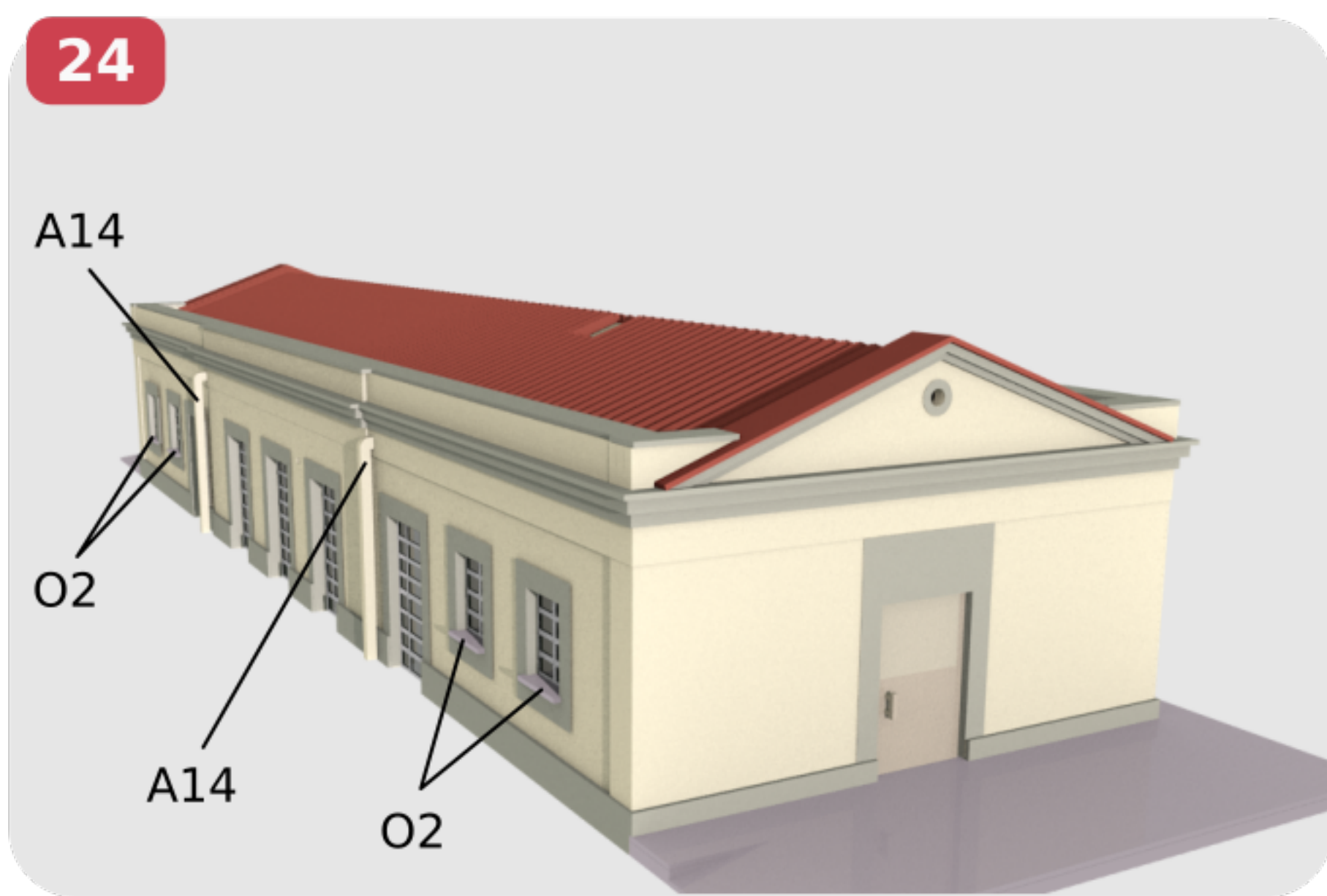
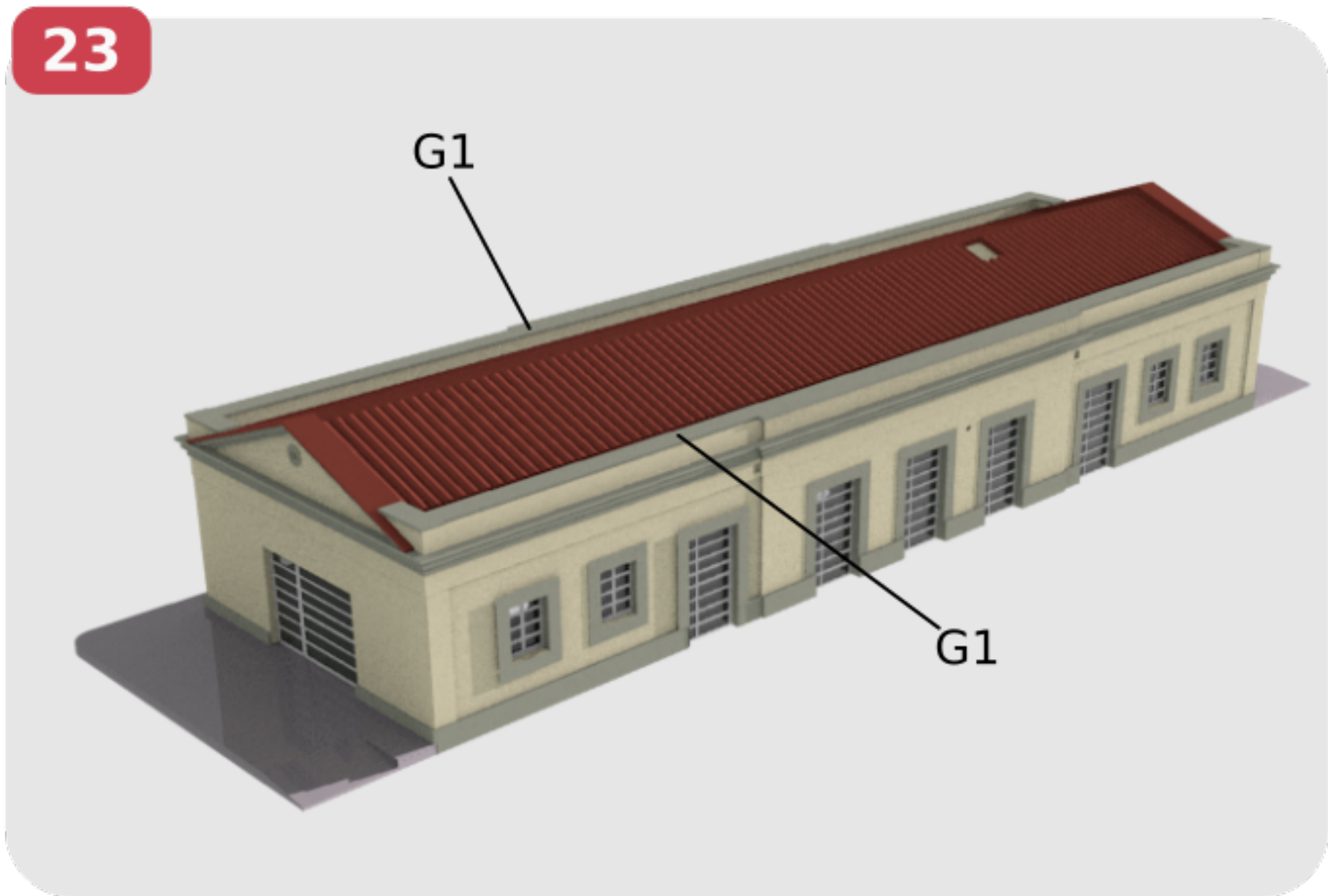
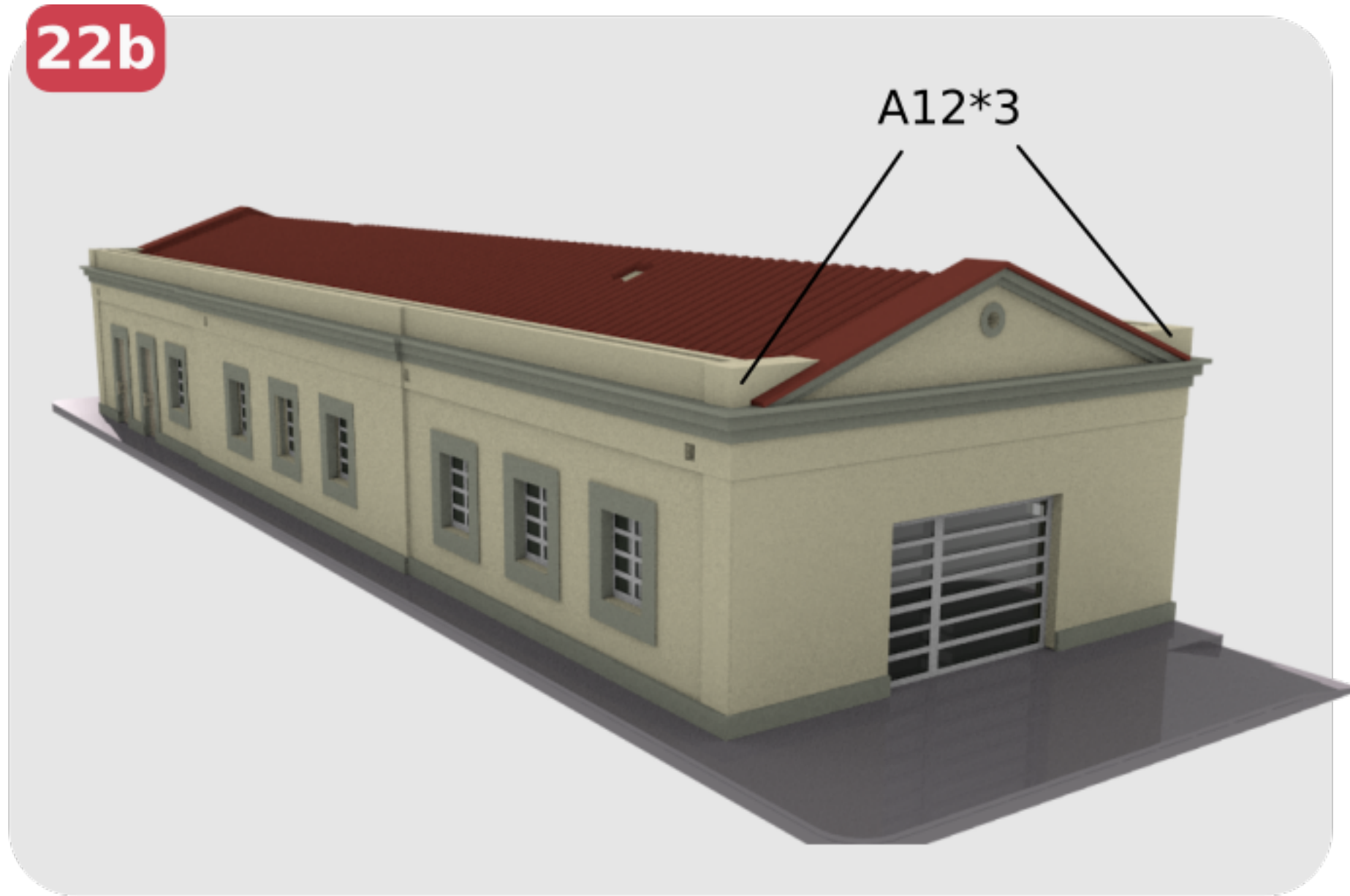
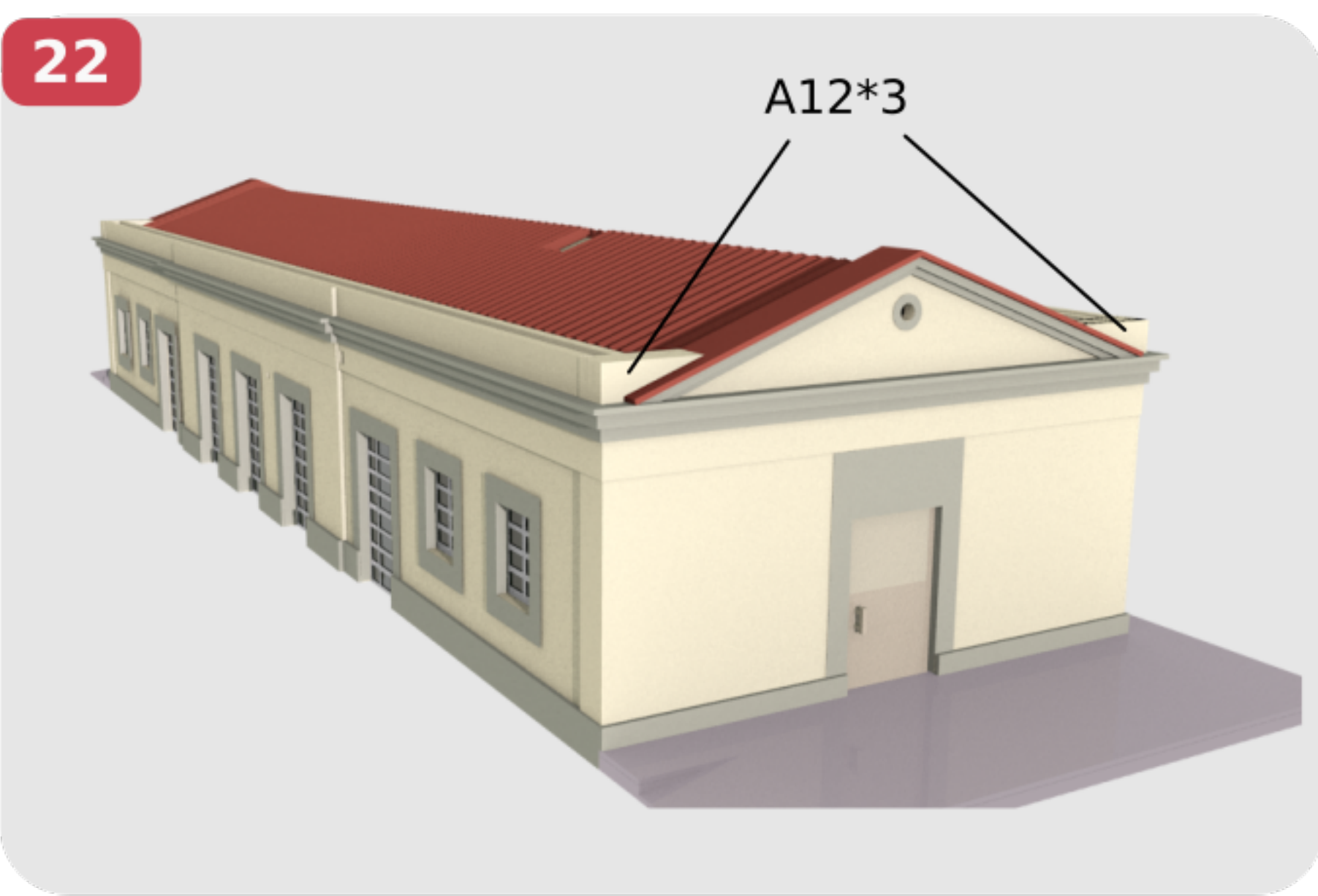


21

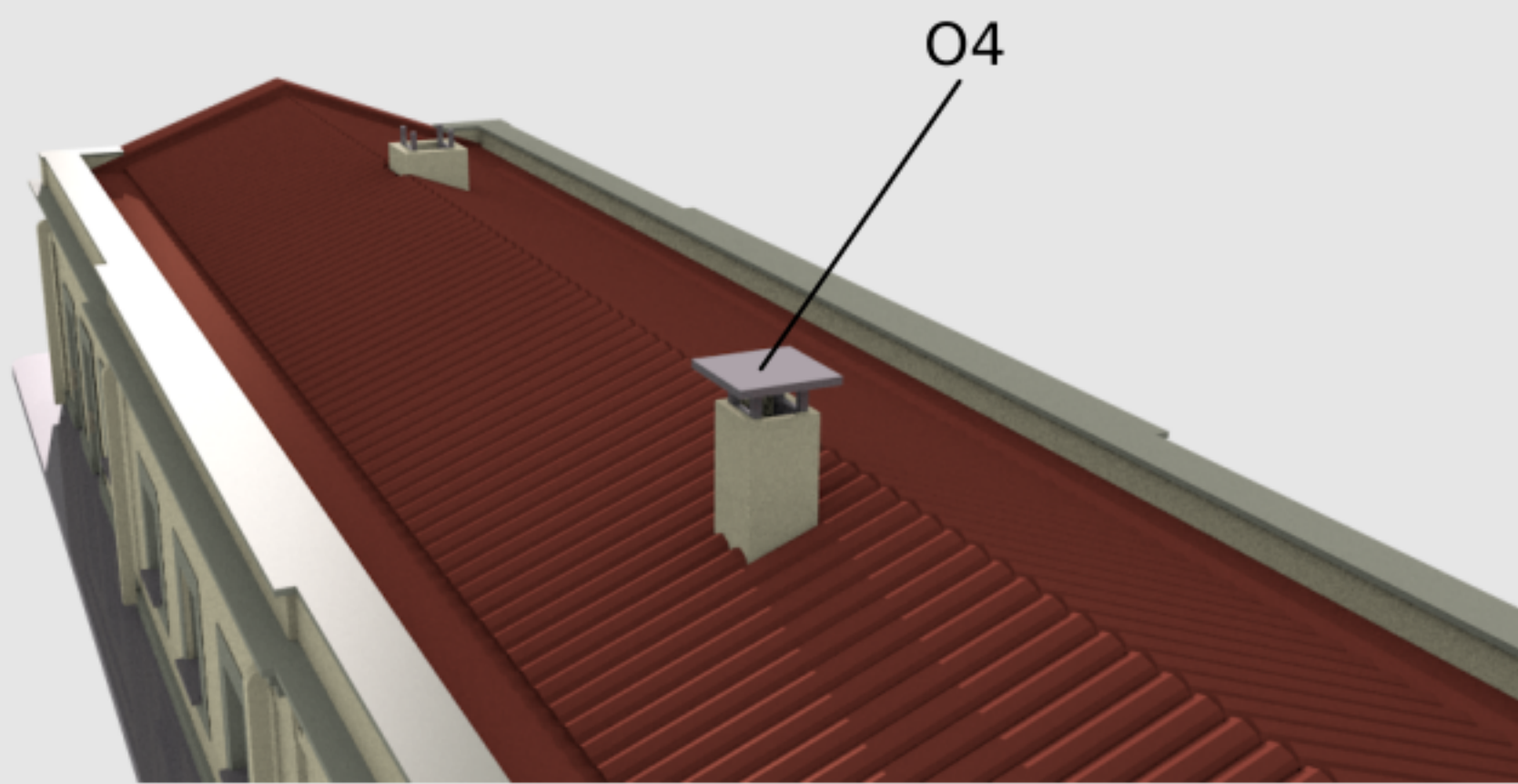


21b

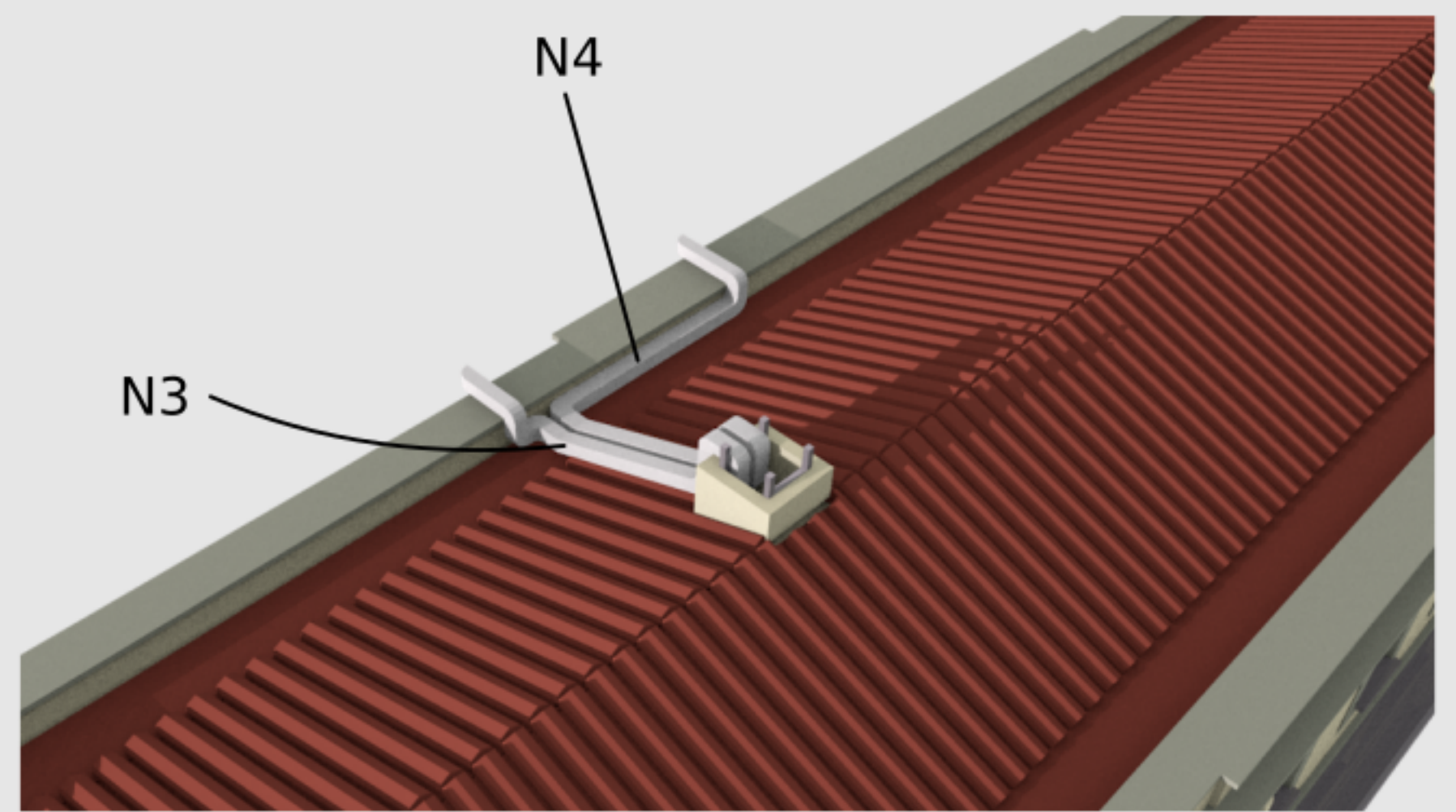




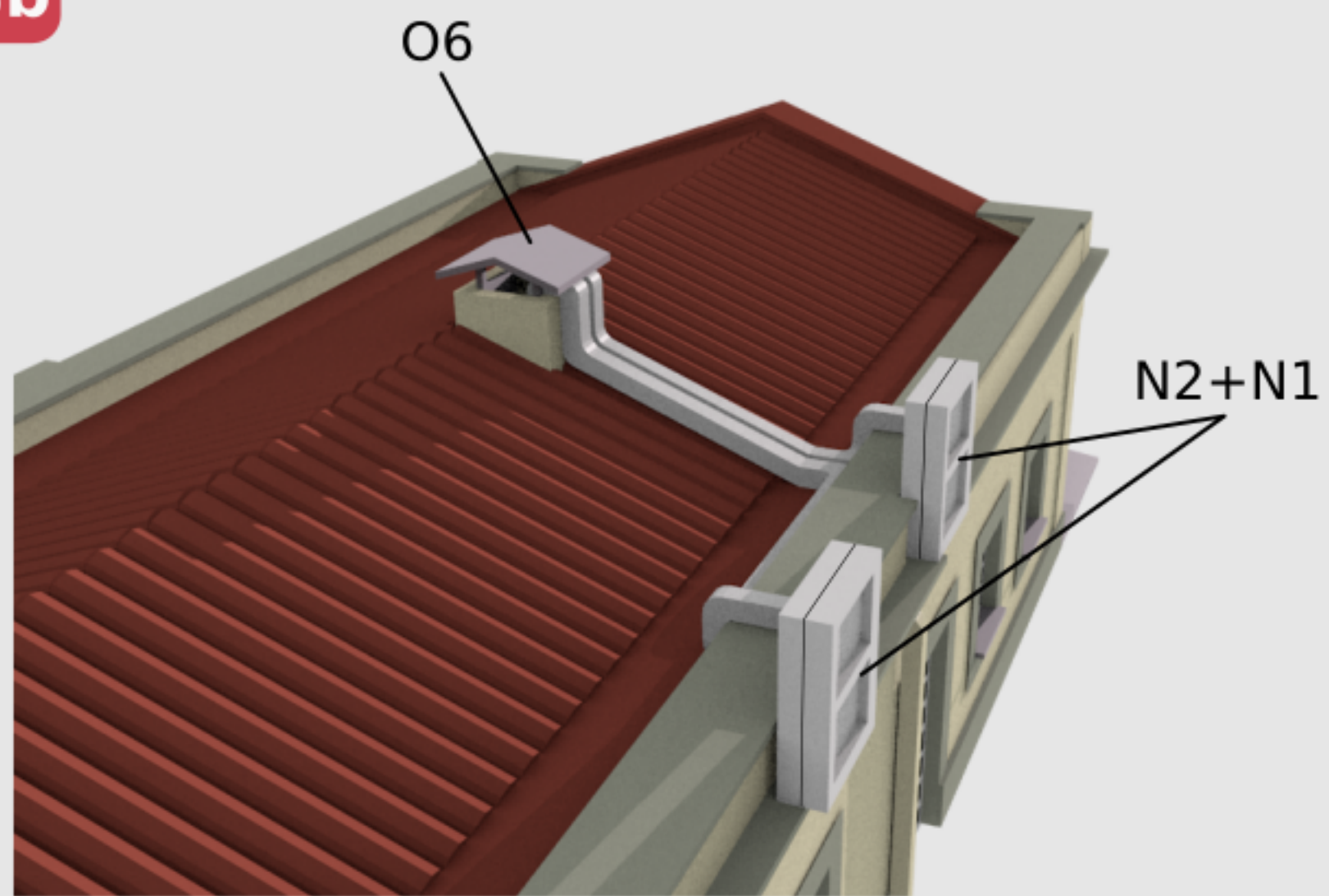
27



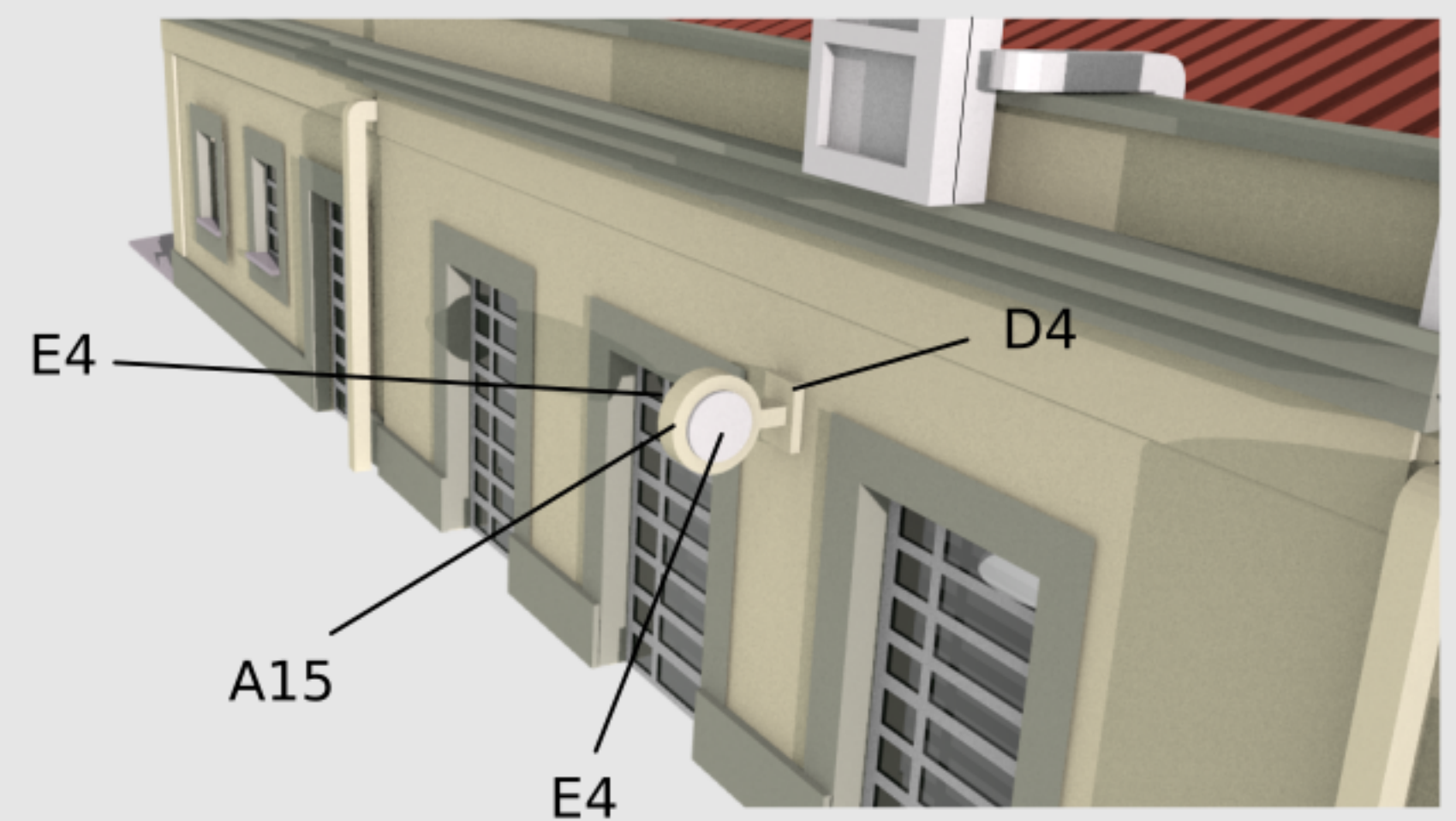
28



28b



29



30

